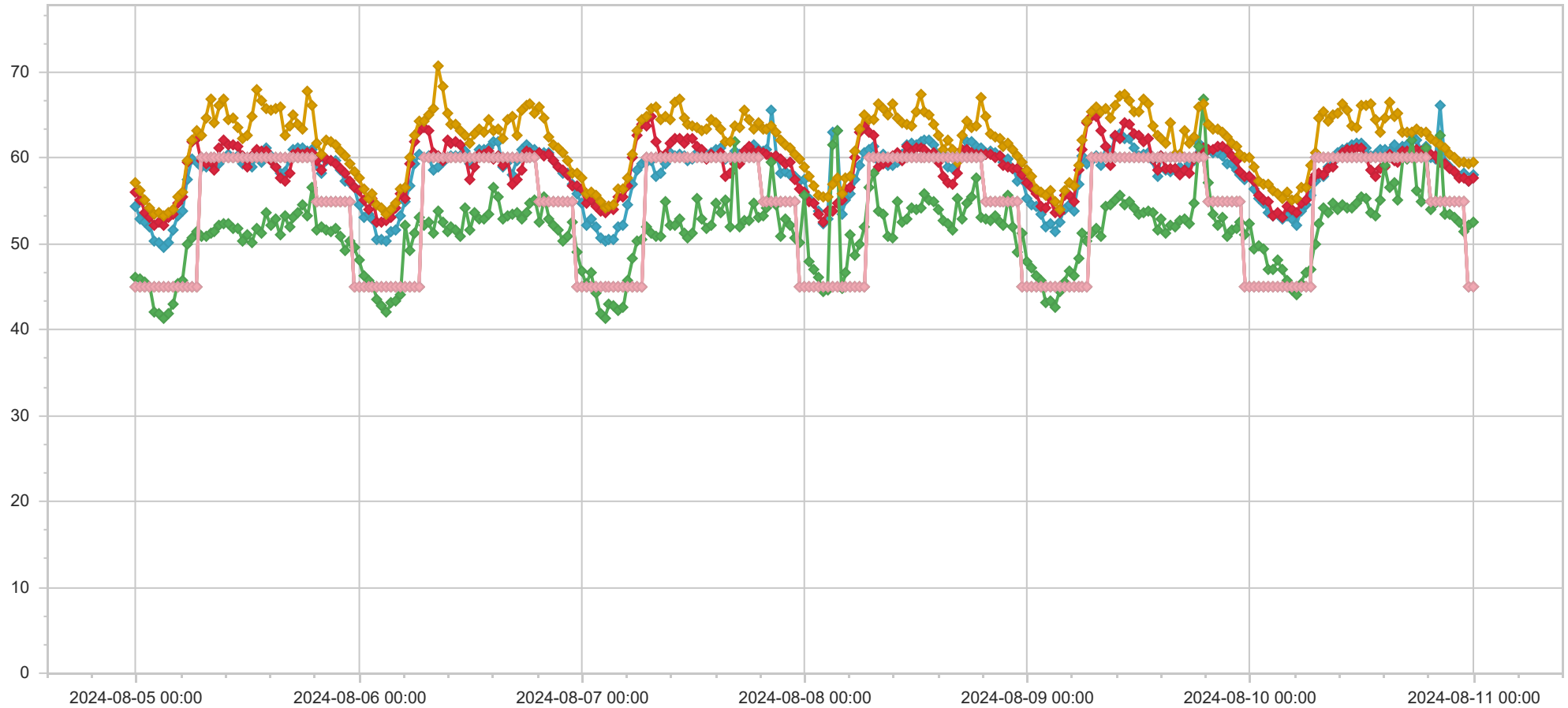


◆ ST01 ◆ ST04 ◆ ST02 ◆ ST03 ◆ ST01 Alarm ◆ ST02 Alarm ◆ ST03 Alarm ◆ ST04 Alarm



Namn	Adress	Datum	LEQ dBa	LMAX dBa	dbOffset	Larm	Kommentar
ST01	Høvikveien 2C	2024-08-11 00:00:00	58,1	76,7	-6,0	45	
ST04	Sandviksveien 70	2024-08-11 00:00:00	57,6	66,3	-6,0	45	
ST02	Kirkeveien 4	2024-08-11 00:00:00	52,5	69,1	-6,0	45	
ST03	Sandviksveien 52	2024-08-11 00:00:00	59,6	65,2	-6,0	45	
ST01	Høvikveien 2C	2024-08-10 23:30:00	57,3	75,6	-6,0	45	
ST04	Sandviksveien 70	2024-08-10 23:30:00	57,3	67,4	-6,0	45	
ST02	Kirkeveien 4	2024-08-10 23:30:00	52,1	71,3	-6,0	45	
ST03	Sandviksveien 52	2024-08-10 23:30:00	59,4	68,0	-6,0	45	
ST01	Høvikveien 2C	2024-08-10 23:00:00	58,2	75,9	-6,0	55	
ST04	Sandviksveien 70	2024-08-10 23:00:00	57,7	67,3	-6,0	55	
ST02	Kirkeveien 4	2024-08-10 23:00:00	51,5	70,5	-6,0	55	
ST03	Sandviksveien 52	2024-08-10 23:00:00	59,6	65,6	-6,0	55	
ST01	Høvikveien 2C	2024-08-10 22:30:00	57,9	71,0	-6,0	55	
ST04	Sandviksveien 70	2024-08-10 22:30:00	57,7	67,6	-6,0	55	
ST02	Kirkeveien 4	2024-08-10 22:30:00	52,6	68,0	-6,0	55	
ST03	Sandviksveien 52	2024-08-10 22:30:00	59,6	68,5	-6,0	55	
ST01	Høvikveien 2C	2024-08-10 22:00:00	58,5	70,1	-6,0	55	
ST04	Sandviksveien 70	2024-08-10 22:00:00	58,4	68,1	-6,0	55	
ST02	Kirkeveien 4	2024-08-10 22:00:00	53,1	68,9	-6,0	55	
ST03	Sandviksveien 52	2024-08-10 22:00:00	60,0	66,8	-6,0	55	
ST01	Høvikveien 2C	2024-08-10 21:30:00	59,0	72,1	-6,0	55	
ST04	Sandviksveien 70	2024-08-10 21:30:00	58,8	66,7	-6,0	55	
ST02	Kirkeveien 4	2024-08-10 21:30:00	53,4	75,2	-6,0	55	
ST03	Sandviksveien 52	2024-08-10 21:30:00	60,5	70,3	-6,0	55	
ST01	Høvikveien 2C	2024-08-10 21:00:00	59,6	72,0	-6,0	55	
ST04	Sandviksveien 70	2024-08-10 21:00:00	59,4	74,5	-6,0	55	
ST02	Kirkeveien 4	2024-08-10 21:00:00	53,4	69,7	-6,0	55	
ST03	Sandviksveien 52	2024-08-10 21:00:00	61,2	75,6	-6,0	55	
ST01	Høvikveien 2C	2024-08-10 20:30:00	66,1	87,2	-6,0	55	
ST04	Sandviksveien 70	2024-08-10 20:30:00	59,4	77,5	-6,0	55	
ST02	Kirkeveien 4	2024-08-10 20:30:00	62,7	85,0	-6,0	55	
ST03	Sandviksveien 52	2024-08-10 20:30:00	61,5	72,8	-6,0	55	
ST01	Høvikveien 2C	2024-08-10 20:00:00	59,9	73,0	-6,0	55	
ST04	Sandviksveien 70	2024-08-10 20:00:00	60,2	77,6	-6,0	55	
ST02	Kirkeveien 4	2024-08-10 20:00:00	54,7	73,2	-6,0	55	
ST03	Sandviksveien 52	2024-08-10 20:00:00	61,9	74,9	-6,0	55	
ST01	Høvikveien 2C	2024-08-10 19:30:00	60,1	75,0	-6,0	55	
ST04	Sandviksveien 70	2024-08-10 19:30:00	60,4	71,9	-6,0	55	
ST02	Kirkeveien 4	2024-08-10 19:30:00	54,0	73,9	-6,0	55	
ST03	Sandviksveien 52	2024-08-10 19:30:00	62,2	72,9	-6,0	55	
ST01	Høvikveien 2C	2024-08-10 19:00:00	61,4	74,6	-6,0	60	
ST04	Sandviksveien 70	2024-08-10 19:00:00	60,9	70,7	-6,0	60	
ST02	Kirkeveien 4	2024-08-10 19:00:00	61,1	82,9	-6,0	60	
ST03	Sandviksveien 52	2024-08-10 19:00:00	63,1	69,8	-6,0	60	

Namn	Adress	Datum	LEQ dBa	LMAX dBa	dbOffset	Larm	Kommentar
ST01	Høvikveien 2C	2024-08-10 18:30:00	60,6	69,3	-6,0	60	
ST04	Sandviksveien 70	2024-08-10 18:30:00	60,9	70,3	-6,0	60	
ST02	Kirkeveien 4	2024-08-10 18:30:00	55,0	68,7	-6,0	60	
ST03	Sandviksveien 52	2024-08-10 18:30:00	63,0	70,1	-6,0	60	
ST01	Høvikveien 2C	2024-08-10 18:00:00	62,1	84,0	-6,0	60	
ST04	Sandviksveien 70	2024-08-10 18:00:00	61,0	68,6	-6,0	60	
ST02	Kirkeveien 4	2024-08-10 18:00:00	56,2	70,8	-6,0	60	
ST03	Sandviksveien 52	2024-08-10 18:00:00	63,3	67,9	-6,0	60	
ST01	Høvikveien 2C	2024-08-10 17:30:00	62,7	85,4	-6,0	60	
ST04	Sandviksveien 70	2024-08-10 17:30:00	60,6	67,2	-6,0	60	
ST02	Kirkeveien 4	2024-08-10 17:30:00	62,1	86,9	-6,0	60	
ST03	Sandviksveien 52	2024-08-10 17:30:00	63,0	74,2	-6,0	60	
ST01	Høvikveien 2C	2024-08-10 17:00:00	61,6	74,1	-6,0	60	
ST04	Sandviksveien 70	2024-08-10 17:00:00	60,8	73,4	-6,0	60	
ST02	Kirkeveien 4	2024-08-10 17:00:00	59,8	79,8	-6,0	60	
ST03	Sandviksveien 52	2024-08-10 17:00:00	63,0	76,2	-6,0	60	
ST01	Høvikveien 2C	2024-08-10 16:30:00	61,4	77,2	-6,0	60	
ST04	Sandviksveien 70	2024-08-10 16:30:00	60,8	68,5	-6,0	60	
ST02	Kirkeveien 4	2024-08-10 16:30:00	60,1	79,8	-6,0	60	
ST03	Sandviksveien 52	2024-08-10 16:30:00	63,0	71,6	-6,0	60	
ST01	Høvikveien 2C	2024-08-10 16:00:00	60,7	76,9	-6,0	60	
ST04	Sandviksveien 70	2024-08-10 16:00:00	59,6	67,0	-6,0	60	
ST02	Kirkeveien 4	2024-08-10 16:00:00	55,2	78,9	-6,0	60	
ST03	Sandviksveien 52	2024-08-10 16:00:00	65,3	82,2	-6,0	60	
ST01	Høvikveien 2C	2024-08-10 15:30:00	61,5	79,9	-6,0	60	
ST02	Kirkeveien 4	2024-08-10 15:30:00	57,1	81,2	-6,0	60	
ST04	Sandviksveien 70	2024-08-10 15:30:00	59,7	71,8	-6,0	60	
ST03	Sandviksveien 52	2024-08-10 15:30:00	64,8	76,3	-6,0	60	
ST01	Høvikveien 2C	2024-08-10 15:00:00	60,9	71,6	-6,0	60	
ST02	Kirkeveien 4	2024-08-10 15:00:00	56,6	79,1	-6,0	60	
ST04	Sandviksveien 70	2024-08-10 15:00:00	60,4	67,6	-6,0	60	
ST03	Sandviksveien 52	2024-08-10 15:00:00	66,4	84,1	-6,0	60	
ST01	Høvikveien 2C	2024-08-10 14:30:00	60,9	75,4	-6,0	60	
ST02	Kirkeveien 4	2024-08-10 14:30:00	59,1	94,6	-6,0	60	
ST04	Sandviksveien 70	2024-08-10 14:30:00	59,0	75,6	-6,0	60	
ST03	Sandviksveien 52	2024-08-10 14:30:00	64,6	81,3	-6,0	60	
ST01	Høvikveien 2C	2024-08-10 14:00:00	61,0	72,4	-6,0	60	
ST02	Kirkeveien 4	2024-08-10 14:00:00	55,1	82,4	-6,0	60	
ST04	Sandviksveien 70	2024-08-10 14:00:00	58,8	71,6	-6,0	60	
ST03	Sandviksveien 52	2024-08-10 14:00:00	63,1	67,7	-6,0	60	
ST01	Høvikveien 2C	2024-08-10 13:30:00	60,4	75,6	-6,0	60	
ST02	Kirkeveien 4	2024-08-10 13:30:00	53,2	71,1	-6,0	60	
ST04	Sandviksveien 70	2024-08-10 13:30:00	57,9	65,5	-6,0	60	
ST03	Sandviksveien 52	2024-08-10 13:30:00	64,4	87,4	-6,0	60	

Namn	Adress	Datum	LEQ dBa	LMAX dBa	dbOffset	Larm	Kommentar
ST01	Høvikveien 2C	2024-08-10 13:00:00	60,2	72,5	-6,0	60	
ST02	Kirkeveien 4	2024-08-10 13:00:00	53,6	78,6	-6,0	60	
ST04	Sandviksveien 70	2024-08-10 13:00:00	58,6	65,9	-6,0	60	
ST03	Sandviksveien 52	2024-08-10 13:00:00	66,3	87,2	-6,0	60	
ST01	Høvikveien 2C	2024-08-10 12:30:00	61,2	75,1	-6,0	60	
ST02	Kirkeveien 4	2024-08-10 12:30:00	55,3	79,9	-6,0	60	
ST04	Sandviksveien 70	2024-08-10 12:30:00	60,1	68,3	-6,0	60	
ST03	Sandviksveien 52	2024-08-10 12:30:00	66,2	89,5	-6,0	60	
ST01	Høvikveien 2C	2024-08-10 12:00:00	61,7	71,0	-6,0	60	
ST02	Kirkeveien 4	2024-08-10 12:00:00	55,5	76,1	-6,0	60	
ST04	Sandviksveien 70	2024-08-10 12:00:00	61,2	69,5	-6,0	60	
ST03	Sandviksveien 52	2024-08-10 12:00:00	66,2	87,3	-6,0	60	
ST01	Høvikveien 2C	2024-08-10 11:30:00	61,7	68,5	-6,0	60	
ST02	Kirkeveien 4	2024-08-10 11:30:00	54,8	71,9	-6,0	60	
ST04	Sandviksveien 70	2024-08-10 11:30:00	61,1	71,0	-6,0	60	
ST03	Sandviksveien 52	2024-08-10 11:30:00	63,6	68,0	-6,0	60	
ST01	Høvikveien 2C	2024-08-10 11:00:00	61,5	74,1	-6,0	60	
ST02	Kirkeveien 4	2024-08-10 11:00:00	54,2	68,0	-6,0	60	
ST04	Sandviksveien 70	2024-08-10 11:00:00	60,9	66,5	-6,0	60	
ST03	Sandviksveien 52	2024-08-10 11:00:00	63,7	76,8	-6,0	60	
ST01	Høvikveien 2C	2024-08-10 10:30:00	61,1	71,8	-6,0	60	
ST02	Kirkeveien 4	2024-08-10 10:30:00	54,3	68,6	-6,0	60	
ST04	Sandviksveien 70	2024-08-10 10:30:00	61,0	71,5	-6,0	60	
ST03	Sandviksveien 52	2024-08-10 10:30:00	65,5	81,5	-6,0	60	
ST01	Høvikveien 2C	2024-08-10 10:00:00	60,9	77,1	-6,0	60	
ST02	Kirkeveien 4	2024-08-10 10:00:00	54,7	68,7	-6,0	60	
ST04	Sandviksveien 70	2024-08-10 10:00:00	60,6	67,8	-6,0	60	
ST03	Sandviksveien 52	2024-08-10 10:00:00	66,4	88,2	-6,0	60	
ST01	Høvikveien 2C	2024-08-10 09:30:00	60,6	77,0	-6,0	60	
ST02	Kirkeveien 4	2024-08-10 09:30:00	54,0	72,7	-6,0	60	
ST04	Sandviksveien 70	2024-08-10 09:30:00	60,0	68,5	-6,0	60	
ST03	Sandviksveien 52	2024-08-10 09:30:00	65,3	79,3	-6,0	60	
ST01	Høvikveien 2C	2024-08-10 09:00:00	59,6	74,1	-6,0	60	
ST02	Kirkeveien 4	2024-08-10 09:00:00	54,7	77,8	-6,0	60	
ST04	Sandviksveien 70	2024-08-10 09:00:00	59,1	69,6	-6,0	60	
ST03	Sandviksveien 52	2024-08-10 09:00:00	65,1	87,9	-6,0	60	
ST01	Høvikveien 2C	2024-08-10 08:30:00	59,1	69,6	-6,0	60	
ST02	Kirkeveien 4	2024-08-10 08:30:00	53,7	76,6	-6,0	60	
ST04	Sandviksveien 70	2024-08-10 08:30:00	58,7	67,3	-6,0	60	
ST03	Sandviksveien 52	2024-08-10 08:30:00	64,2	82,0	-6,0	60	
ST01	Høvikveien 2C	2024-08-10 08:00:00	57,9	69,9	-6,0	60	
ST02	Kirkeveien 4	2024-08-10 08:00:00	54,3	85,4	-6,0	60	
ST04	Sandviksveien 70	2024-08-10 08:00:00	58,1	67,0	-6,0	60	
ST03	Sandviksveien 52	2024-08-10 08:00:00	65,4	89,0	-6,0	60	

Namn	Adress	Datum	LEQ dBa	LMAX dBa	dbOffset	Larm	Kommentar
ST01	Høvikveien 2C	2024-08-10 07:30:00	58,1	74,2	-6,0	60	
ST02	Kirkeveien 4	2024-08-10 07:30:00	52,4	69,6	-6,0	60	
ST04	Sandviksveien 70	2024-08-10 07:30:00	58,2	67,8	-6,0	60	
ST03	Sandviksveien 52	2024-08-10 07:30:00	64,7	87,9	-6,0	60	
ST01	Høvikveien 2C	2024-08-10 07:00:00	57,3	71,2	-6,0	60	
ST02	Kirkeveien 4	2024-08-10 07:00:00	50,0	67,3	-6,0	60	
ST04	Sandviksveien 70	2024-08-10 07:00:00	58,1	67,9	-6,0	60	
ST03	Sandviksveien 52	2024-08-10 07:00:00	60,6	69,6	-6,0	60	
ST01	Høvikveien 2C	2024-08-10 06:30:00	55,7	75,3	-6,0	45	
ST02	Kirkeveien 4	2024-08-10 06:30:00	47,1	67,0	-6,0	45	
ST04	Sandviksveien 70	2024-08-10 06:30:00	57,3	67,1	-6,0	45	
ST03	Sandviksveien 52	2024-08-10 06:30:00	59,1	67,6	-6,0	45	
ST01	Høvikveien 2C	2024-08-10 06:00:00	54,5	75,8	-6,0	45	
ST02	Kirkeveien 4	2024-08-10 06:00:00	46,6	70,5	-6,0	45	
ST04	Sandviksveien 70	2024-08-10 06:00:00	55,1	67,2	-6,0	45	
ST03	Sandviksveien 52	2024-08-10 06:00:00	56,6	66,2	-6,0	45	
ST01	Høvikveien 2C	2024-08-10 05:30:00	53,8	69,0	-6,0	45	
ST02	Kirkeveien 4	2024-08-10 05:30:00	45,5	65,9	-6,0	45	
ST04	Sandviksveien 70	2024-08-10 05:30:00	54,8	66,3	-6,0	45	
ST03	Sandviksveien 52	2024-08-10 05:30:00	56,6	71,7	-6,0	45	
ST01	Høvikveien 2C	2024-08-10 05:00:00	52,2	70,1	-6,0	45	
ST02	Kirkeveien 4	2024-08-10 05:00:00	44,1	67,6	-6,0	45	
ST04	Sandviksveien 70	2024-08-10 05:00:00	53,6	67,7	-6,0	45	
ST03	Sandviksveien 52	2024-08-10 05:00:00	55,4	65,9	-6,0	45	
ST01	Høvikveien 2C	2024-08-10 04:30:00	53,0	72,9	-6,0	45	
ST02	Kirkeveien 4	2024-08-10 04:30:00	44,6	67,4	-6,0	45	
ST04	Sandviksveien 70	2024-08-10 04:30:00	54,0	67,3	-6,0	45	
ST03	Sandviksveien 52	2024-08-10 04:30:00	55,2	66,3	-6,0	45	
ST01	Høvikveien 2C	2024-08-10 04:00:00	53,2	62,4	-6,0	45	
ST02	Kirkeveien 4	2024-08-10 04:00:00	45,7	55,8	-6,0	45	
ST04	Sandviksveien 70	2024-08-10 04:00:00	54,4	67,5	-6,0	45	
ST03	Sandviksveien 52	2024-08-10 04:00:00	56,0	67,1	-6,0	45	
ST01	Høvikveien 2C	2024-08-10 03:30:00	52,9	63,4	-6,0	45	
ST02	Kirkeveien 4	2024-08-10 03:30:00	47,0	57,4	-6,0	45	
ST04	Sandviksveien 70	2024-08-10 03:30:00	53,1	67,2	-6,0	45	
ST03	Sandviksveien 52	2024-08-10 03:30:00	55,3	64,8	-6,0	45	
ST01	Høvikveien 2C	2024-08-10 03:00:00	53,4	62,2	-6,0	45	
ST02	Kirkeveien 4	2024-08-10 03:00:00	48,1	59,6	-6,0	45	
ST04	Sandviksveien 70	2024-08-10 03:00:00	53,6	67,8	-6,0	45	
ST03	Sandviksveien 52	2024-08-10 03:00:00	55,9	65,0	-6,0	45	
ST01	Høvikveien 2C	2024-08-10 02:30:00	53,2	60,9	-6,0	45	
ST02	Kirkeveien 4	2024-08-10 02:30:00	47,0	56,1	-6,0	45	
ST04	Sandviksveien 70	2024-08-10 02:30:00	53,3	65,2	-6,0	45	
ST03	Sandviksveien 52	2024-08-10 02:30:00	56,2	63,5	-6,0	45	

Namn	Adress	Datum	LEQ dBa	LMAX dBa	dbOffset	Larm	Kommentar
ST01	Høvikveien 2C	2024-08-10 02:00:00	53,7	65,8	-6,0	45	
ST02	Kirkeveien 4	2024-08-10 02:00:00	47,0	56,3	-6,0	45	
ST04	Sandviksveien 70	2024-08-10 02:00:00	54,9	69,9	-6,0	45	
ST03	Sandviksveien 52	2024-08-10 02:00:00	56,9	72,1	-6,0	45	
ST01	Høvikveien 2C	2024-08-10 01:30:00	54,8	69,4	-6,0	45	
ST02	Kirkeveien 4	2024-08-10 01:30:00	49,5	70,6	-6,0	45	
ST04	Sandviksveien 70	2024-08-10 01:30:00	55,2	67,8	-6,0	45	
ST03	Sandviksveien 52	2024-08-10 01:30:00	57,0	64,4	-6,0	45	
ST01	Høvikveien 2C	2024-08-10 01:00:00	55,4	69,5	-6,0	45	
ST02	Kirkeveien 4	2024-08-10 01:00:00	49,7	68,9	-6,0	45	
ST04	Sandviksveien 70	2024-08-10 01:00:00	55,7	66,7	-6,0	45	
ST03	Sandviksveien 52	2024-08-10 01:00:00	57,4	65,1	-6,0	45	
ST01	Høvikveien 2C	2024-08-10 00:30:00	56,5	70,0	-6,0	45	
ST02	Kirkeveien 4	2024-08-10 00:30:00	49,5	68,3	-6,0	45	
ST04	Sandviksveien 70	2024-08-10 00:30:00	57,3	67,4	-6,0	45	
ST03	Sandviksveien 52	2024-08-10 00:30:00	59,0	65,2	-6,0	45	
ST01	Høvikveien 2C	2024-08-10 00:00:00	57,9	74,2	-6,0	45	
ST02	Kirkeveien 4	2024-08-10 00:00:00	52,4	72,3	-6,0	45	
ST04	Sandviksveien 70	2024-08-10 00:00:00	57,8	73,6	-6,0	45	
ST03	Sandviksveien 52	2024-08-10 00:00:00	60,1	78,2	-6,0	45	
ST01	Høvikveien 2C	2024-08-09 23:30:00	57,5	76,2	-6,0	45	
ST02	Kirkeveien 4	2024-08-09 23:30:00	51,1	67,8	-6,0	45	
ST04	Sandviksveien 70	2024-08-09 23:30:00	57,9	67,8	-6,0	45	
ST03	Sandviksveien 52	2024-08-09 23:30:00	60,0	67,5	-6,0	45	
ST01	Høvikveien 2C	2024-08-09 23:00:00	58,0	75,3	-6,0	55	
ST02	Kirkeveien 4	2024-08-09 23:00:00	52,5	70,0	-6,0	55	
ST04	Sandviksveien 70	2024-08-09 23:00:00	58,5	67,5	-6,0	55	
ST03	Sandviksveien 52	2024-08-09 23:00:00	60,5	70,1	-6,0	55	
ST01	Høvikveien 2C	2024-08-09 22:30:00	58,7	69,2	-6,0	55	
ST02	Kirkeveien 4	2024-08-09 22:30:00	51,9	70,7	-6,0	55	
ST04	Sandviksveien 70	2024-08-09 22:30:00	59,8	67,0	-6,0	55	
ST03	Sandviksveien 52	2024-08-09 22:30:00	61,4	71,5	-6,0	55	
ST01	Høvikveien 2C	2024-08-09 22:00:00	59,3	73,4	-6,0	55	
ST02	Kirkeveien 4	2024-08-09 22:00:00	51,7	68,7	-6,0	55	
ST04	Sandviksveien 70	2024-08-09 22:00:00	60,3	73,1	-6,0	55	
ST03	Sandviksveien 52	2024-08-09 22:00:00	61,8	74,1	-6,0	55	
ST01	Høvikveien 2C	2024-08-09 21:30:00	59,3	73,0	-6,0	55	
ST02	Kirkeveien 4	2024-08-09 21:30:00	51,0	68,3	-6,0	55	
ST04	Sandviksveien 70	2024-08-09 21:30:00	61,0	68,2	-6,0	55	
ST03	Sandviksveien 52	2024-08-09 21:30:00	62,4	68,2	-6,0	55	
ST01	Høvikveien 2C	2024-08-09 21:00:00	60,2	76,7	-6,0	55	
ST02	Kirkeveien 4	2024-08-09 21:00:00	53,1	82,0	-6,0	55	
ST04	Sandviksveien 70	2024-08-09 21:00:00	61,4	67,4	-6,0	55	
ST03	Sandviksveien 52	2024-08-09 21:00:00	63,0	68,0	-6,0	55	

Namn	Adress	Datum	LEQ dBa	LMAX dBa	dbOffset	Larm	Kommentar
ST01	Høvikveien 2C	2024-08-09 20:30:00	60,6	74,0	-6,0	55	
ST02	Kirkeveien 4	2024-08-09 20:30:00	52,2	68,5	-6,0	55	
ST04	Sandviksveien 70	2024-08-09 20:30:00	61,4	72,1	-6,0	55	
ST03	Sandviksveien 52	2024-08-09 20:30:00	63,4	69,0	-6,0	55	
ST01	Høvikveien 2C	2024-08-09 20:00:00	60,7	73,0	-6,0	55	
ST02	Kirkeveien 4	2024-08-09 20:00:00	53,4	72,3	-6,0	55	
ST04	Sandviksveien 70	2024-08-09 20:00:00	61,1	72,6	-6,0	55	
ST03	Sandviksveien 52	2024-08-09 20:00:00	63,4	75,4	-6,0	55	
ST01	Høvikveien 2C	2024-08-09 19:30:00	61,0	70,6	-6,0	55	
ST02	Kirkeveien 4	2024-08-09 19:30:00	57,2	81,9	-6,0	55	
ST04	Sandviksveien 70	2024-08-09 19:30:00	60,9	67,9	-6,0	55	
ST03	Sandviksveien 52	2024-08-09 19:30:00	63,9	71,8	-6,0	55	
ST01	Høvikveien 2C	2024-08-09 19:00:00	61,0	71,5	-6,0	60	
ST02	Kirkeveien 4	2024-08-09 19:00:00	66,8	82,7	-6,0	60	
ST04	Sandviksveien 70	2024-08-09 19:00:00	61,2	68,0	-6,0	60	
ST03	Sandviksveien 52	2024-08-09 19:00:00	66,3	86,9	-6,0	60	
ST01	Høvikveien 2C	2024-08-09 18:30:00	61,7	77,5	-6,0	60	
ST02	Kirkeveien 4	2024-08-09 18:30:00	61,4	84,6	-6,0	60	
ST04	Sandviksveien 70	2024-08-09 18:30:00	60,5	70,1	-6,0	60	
ST03	Sandviksveien 52	2024-08-09 18:30:00	65,9	91,9	-6,0	60	
ST01	Høvikveien 2C	2024-08-09 18:00:00	59,7	77,8	-6,0	60	
ST02	Kirkeveien 4	2024-08-09 18:00:00	54,8	77,7	-6,0	60	
ST04	Sandviksveien 70	2024-08-09 18:00:00	59,9	67,5	-6,0	60	
ST03	Sandviksveien 52	2024-08-09 18:00:00	62,4	79,8	-6,0	60	
ST01	Høvikveien 2C	2024-08-09 17:30:00	59,3	78,9	-6,0	60	
ST02	Kirkeveien 4	2024-08-09 17:30:00	52,3	71,2	-6,0	60	
ST04	Sandviksveien 70	2024-08-09 17:30:00	58,3	71,4	-6,0	60	
ST03	Sandviksveien 52	2024-08-09 17:30:00	61,7	80,6	-6,0	60	
ST01	Høvikveien 2C	2024-08-09 17:00:00	58,6	73,5	-6,0	60	
ST02	Kirkeveien 4	2024-08-09 17:00:00	52,8	74,4	-6,0	60	
ST04	Sandviksveien 70	2024-08-09 17:00:00	58,6	69,3	-6,0	60	
ST03	Sandviksveien 52	2024-08-09 17:00:00	63,1	78,6	-6,0	60	
ST01	Høvikveien 2C	2024-08-09 16:30:00	59,1	74,3	-6,0	60	
ST02	Kirkeveien 4	2024-08-09 16:30:00	52,7	68,4	-6,0	60	
ST04	Sandviksveien 70	2024-08-09 16:30:00	58,0	67,6	-6,0	60	
ST03	Sandviksveien 52	2024-08-09 16:30:00	60,5	70,5	-6,0	60	
ST01	Høvikveien 2C	2024-08-09 16:00:00	58,5	74,8	-6,0	60	
ST02	Kirkeveien 4	2024-08-09 16:00:00	51,9	71,8	-6,0	60	
ST04	Sandviksveien 70	2024-08-09 16:00:00	58,9	68,4	-6,0	60	
ST03	Sandviksveien 52	2024-08-09 16:00:00	60,5	70,4	-6,0	60	
ST01	Høvikveien 2C	2024-08-09 15:30:00	58,4	72,0	-6,0	60	
ST02	Kirkeveien 4	2024-08-09 15:30:00	52,3	72,3	-6,0	60	
ST04	Sandviksveien 70	2024-08-09 15:30:00	58,9	66,2	-6,0	60	
ST03	Sandviksveien 52	2024-08-09 15:30:00	64,2	81,7	-6,0	60	

Namn	Adress	Datum	LEQ dBa	LMAX dBa	dbOffset	Larm	Kommentar
ST01	Høvikveien 2C	2024-08-09 15:00:00	58,7	75,9	-6,0	60	
ST02	Kirkeveien 4	2024-08-09 15:00:00	51,3	68,0	-6,0	60	
ST04	Sandviksveien 70	2024-08-09 15:00:00	58,7	68,0	-6,0	60	
ST03	Sandviksveien 52	2024-08-09 15:00:00	61,8	75,9	-6,0	60	
ST01	Høvikveien 2C	2024-08-09 14:30:00	60,2	80,8	-6,0	60	
ST02	Kirkeveien 4	2024-08-09 14:30:00	52,8	72,8	-6,0	60	
ST04	Sandviksveien 70	2024-08-09 14:30:00	60,2	77,3	-6,0	60	
ST03	Sandviksveien 52	2024-08-09 14:30:00	62,2	82,7	-6,0	60	
ST01	Høvikveien 2C	2024-08-09 14:00:00	57,9	72,1	-6,0	60	
ST02	Kirkeveien 4	2024-08-09 14:00:00	51,6	71,4	-6,0	60	
ST04	Sandviksveien 70	2024-08-09 14:00:00	58,7	68,9	-6,0	60	
ST03	Sandviksveien 52	2024-08-09 14:00:00	62,6	79,0	-6,0	60	
ST01	Høvikveien 2C	2024-08-09 13:30:00	59,8	81,3	-6,0	60	
ST02	Kirkeveien 4	2024-08-09 13:30:00	53,7	76,4	-6,0	60	
ST04	Sandviksveien 70	2024-08-09 13:30:00	59,8	68,3	-6,0	60	
ST03	Sandviksveien 52	2024-08-09 13:30:00	63,8	81,3	-6,0	60	
ST01	Høvikveien 2C	2024-08-09 13:00:00	60,6	73,6	-6,0	60	
ST02	Kirkeveien 4	2024-08-09 13:00:00	53,8	68,5	-6,0	60	
ST04	Sandviksveien 70	2024-08-09 13:00:00	62,2	82,9	-6,0	60	
ST03	Sandviksveien 52	2024-08-09 13:00:00	66,4	84,6	-6,0	60	
ST01	Høvikveien 2C	2024-08-09 12:30:00	60,5	71,4	-6,0	60	
ST02	Kirkeveien 4	2024-08-09 12:30:00	53,6	66,3	-6,0	60	
ST04	Sandviksveien 70	2024-08-09 12:30:00	61,9	69,2	-6,0	60	
ST03	Sandviksveien 52	2024-08-09 12:30:00	66,9	79,3	-6,0	60	
ST01	Høvikveien 2C	2024-08-09 12:00:00	60,3	76,4	-6,0	60	
ST02	Kirkeveien 4	2024-08-09 12:00:00	53,5	72,6	-6,0	60	
ST04	Sandviksveien 70	2024-08-09 12:00:00	62,6	68,7	-6,0	60	
ST03	Sandviksveien 52	2024-08-09 12:00:00	65,4	71,1	-6,0	60	
ST01	Høvikveien 2C	2024-08-09 11:30:00	61,3	73,1	-6,0	60	
ST02	Kirkeveien 4	2024-08-09 11:30:00	54,2	67,7	-6,0	60	
ST04	Sandviksveien 70	2024-08-09 11:30:00	62,9	70,0	-6,0	60	
ST03	Sandviksveien 52	2024-08-09 11:30:00	65,4	70,5	-6,0	60	
ST01	Høvikveien 2C	2024-08-09 11:00:00	62,2	73,2	-6,0	60	
ST02	Kirkeveien 4	2024-08-09 11:00:00	55,0	69,2	-6,0	60	
ST04	Sandviksveien 70	2024-08-09 11:00:00	64,0	68,2	-6,0	60	
ST03	Sandviksveien 52	2024-08-09 11:00:00	66,7	79,3	-6,0	60	
ST01	Høvikveien 2C	2024-08-09 10:30:00	62,3	70,1	-6,0	60	
ST02	Kirkeveien 4	2024-08-09 10:30:00	54,6	69,9	-6,0	60	
ST04	Sandviksveien 70	2024-08-09 10:30:00	64,2	71,9	-6,0	60	
ST03	Sandviksveien 52	2024-08-09 10:30:00	67,5	83,2	-6,0	60	
ST01	Høvikveien 2C	2024-08-09 10:00:00	62,8	73,7	-6,0	60	
ST02	Kirkeveien 4	2024-08-09 10:00:00	55,7	71,2	-6,0	60	
ST04	Sandviksveien 70	2024-08-09 10:00:00	62,3	68,0	-6,0	60	
ST03	Sandviksveien 52	2024-08-09 10:00:00	67,2	88,9	-6,0	60	



Namn	Adress	Datum	LEQ dBa	LMAX dBa	dbOffset	Larm	Kommentar
ST01	Høvikveien 2C	2024-08-09 09:30:00	62,4	75,0	-6,0	60	
ST02	Kirkeveien 4	2024-08-09 09:30:00	55,1	70,2	-6,0	60	
ST04	Sandviksveien 70	2024-08-09 09:30:00	62,7	68,0	-6,0	60	
ST03	Sandviksveien 52	2024-08-09 09:30:00	66,1	76,3	-6,0	60	
ST01	Høvikveien 2C	2024-08-09 09:00:00	60,7	71,8	-6,0	60	
ST02	Kirkeveien 4	2024-08-09 09:00:00	54,5	84,9	-6,0	60	
ST04	Sandviksveien 70	2024-08-09 09:00:00	59,2	66,4	-6,0	60	
ST03	Sandviksveien 52	2024-08-09 09:00:00	64,7	75,7	-6,0	60	
ST01	Høvikveien 2C	2024-08-09 08:30:00	61,3	81,3	-6,0	60	
ST02	Kirkeveien 4	2024-08-09 08:30:00	54,4	75,9	-6,0	60	
ST04	Sandviksveien 70	2024-08-09 08:30:00	61,4	68,7	-6,0	60	
ST03	Sandviksveien 52	2024-08-09 08:30:00	65,9	78,1	-6,0	60	
ST01	Høvikveien 2C	2024-08-09 08:00:00	59,1	72,8	-6,0	60	
ST02	Kirkeveien 4	2024-08-09 08:00:00	51,0	66,8	-6,0	60	
ST04	Sandviksveien 70	2024-08-09 08:00:00	63,1	69,4	-6,0	60	
ST03	Sandviksveien 52	2024-08-09 08:00:00	65,4	76,6	-6,0	60	
ST01	Høvikveien 2C	2024-08-09 07:30:00	60,3	75,2	-6,0	60	
ST02	Kirkeveien 4	2024-08-09 07:30:00	51,8	72,2	-6,0	60	
ST04	Sandviksveien 70	2024-08-09 07:30:00	64,9	69,0	-6,0	60	
ST03	Sandviksveien 52	2024-08-09 07:30:00	66,0	86,4	-6,0	60	
ST01	Høvikveien 2C	2024-08-09 07:00:00	59,7	74,4	-6,0	60	
ST02	Kirkeveien 4	2024-08-09 07:00:00	51,2	70,3	-6,0	60	
ST04	Sandviksveien 70	2024-08-09 07:00:00	64,8	73,2	-6,0	60	
ST03	Sandviksveien 52	2024-08-09 07:00:00	65,3	69,4	-6,0	60	
ST01	Høvikveien 2C	2024-08-09 06:30:00	59,3	70,8	-6,0	45	
ST02	Kirkeveien 4	2024-08-09 06:30:00	50,4	67,9	-6,0	45	
ST04	Sandviksveien 70	2024-08-09 06:30:00	64,2	72,2	-6,0	45	
ST03	Sandviksveien 52	2024-08-09 06:30:00	64,3	70,1	-6,0	45	
ST01	Høvikveien 2C	2024-08-09 06:00:00	60,2	83,8	-6,0	45	
ST02	Kirkeveien 4	2024-08-09 06:00:00	51,3	70,1	-6,0	45	
ST04	Sandviksveien 70	2024-08-09 06:00:00	61,0	67,8	-6,0	45	
ST03	Sandviksveien 52	2024-08-09 06:00:00	62,1	68,5	-6,0	45	
ST01	Høvikveien 2C	2024-08-09 05:30:00	56,9	77,0	-6,0	45	
ST02	Kirkeveien 4	2024-08-09 05:30:00	48,4	68,2	-6,0	45	
ST04	Sandviksveien 70	2024-08-09 05:30:00	58,7	68,8	-6,0	45	
ST03	Sandviksveien 52	2024-08-09 05:30:00	59,2	66,3	-6,0	45	
ST01	Høvikveien 2C	2024-08-09 05:00:00	53,9	72,5	-6,0	45	
ST02	Kirkeveien 4	2024-08-09 05:00:00	46,4	68,3	-6,0	45	
ST04	Sandviksveien 70	2024-08-09 05:00:00	55,0	72,2	-6,0	45	
ST03	Sandviksveien 52	2024-08-09 05:00:00	56,7	72,7	-6,0	45	
ST01	Høvikveien 2C	2024-08-09 04:30:00	54,6	63,0	-6,0	45	
ST02	Kirkeveien 4	2024-08-09 04:30:00	46,9	54,5	-6,0	45	
ST04	Sandviksveien 70	2024-08-09 04:30:00	55,6	67,4	-6,0	45	
ST03	Sandviksveien 52	2024-08-09 04:30:00	57,2	67,4	-6,0	45	

Namn	Adress	Datum	LEQ dBa	LMAX dBa	dbOffset	Larm	Kommentar
ST01	Høvikveien 2C	2024-08-09 04:00:00	54,1	62,8	-6,0	45	
ST02	Kirkeveien 4	2024-08-09 04:00:00	45,6	52,4	-6,0	45	
ST04	Sandviksveien 70	2024-08-09 04:00:00	55,7	69,5	-6,0	45	
ST03	Sandviksveien 52	2024-08-09 04:00:00	56,2	65,4	-6,0	45	
ST01	Høvikveien 2C	2024-08-09 03:30:00	52,5	71,8	-6,0	45	
ST02	Kirkeveien 4	2024-08-09 03:30:00	44,5	67,1	-6,0	45	
ST04	Sandviksveien 70	2024-08-09 03:30:00	53,7	67,6	-6,0	45	
ST03	Sandviksveien 52	2024-08-09 03:30:00	54,0	63,4	-6,0	45	
ST01	Høvikveien 2C	2024-08-09 03:00:00	51,5	62,0	-6,0	45	
ST02	Kirkeveien 4	2024-08-09 03:00:00	42,7	49,4	-6,0	45	
ST04	Sandviksveien 70	2024-08-09 03:00:00	53,7	67,9	-6,0	45	
ST03	Sandviksveien 52	2024-08-09 03:00:00	54,9	65,7	-6,0	45	
ST01	Høvikveien 2C	2024-08-09 02:30:00	52,4	62,9	-6,0	45	
ST02	Kirkeveien 4	2024-08-09 02:30:00	43,3	50,9	-6,0	45	
ST04	Sandviksveien 70	2024-08-09 02:30:00	55,2	68,1	-6,0	45	
ST03	Sandviksveien 52	2024-08-09 02:30:00	56,3	68,8	-6,0	45	
ST01	Høvikveien 2C	2024-08-09 02:00:00	52,0	61,9	-6,0	45	
ST02	Kirkeveien 4	2024-08-09 02:00:00	43,3	49,3	-6,0	45	
ST04	Sandviksveien 70	2024-08-09 02:00:00	54,2	67,5	-6,0	45	
ST03	Sandviksveien 52	2024-08-09 02:00:00	55,6	66,0	-6,0	45	
ST01	Høvikveien 2C	2024-08-09 01:30:00	53,5	71,7	-6,0	45	
ST02	Kirkeveien 4	2024-08-09 01:30:00	45,8	69,6	-6,0	45	
ST04	Sandviksveien 70	2024-08-09 01:30:00	54,5	67,6	-6,0	45	
ST03	Sandviksveien 52	2024-08-09 01:30:00	56,1	67,3	-6,0	45	
ST01	Høvikveien 2C	2024-08-09 01:00:00	54,3	75,1	-6,0	45	
ST02	Kirkeveien 4	2024-08-09 01:00:00	46,3	67,6	-6,0	45	
ST04	Sandviksveien 70	2024-08-09 01:00:00	55,8	68,2	-6,0	45	
ST03	Sandviksveien 52	2024-08-09 01:00:00	56,4	66,1	-6,0	45	
ST01	Høvikveien 2C	2024-08-09 00:30:00	54,6	68,7	-6,0	45	
ST02	Kirkeveien 4	2024-08-09 00:30:00	47,3	68,9	-6,0	45	
ST04	Sandviksveien 70	2024-08-09 00:30:00	56,6	68,5	-6,0	45	
ST03	Sandviksveien 52	2024-08-09 00:30:00	57,8	66,8	-6,0	45	
ST01	Høvikveien 2C	2024-08-09 00:00:00	55,4	73,6	-6,0	45	
ST02	Kirkeveien 4	2024-08-09 00:00:00	48,0	68,5	-6,0	45	
ST04	Sandviksveien 70	2024-08-09 00:00:00	57,1	67,4	-6,0	45	
ST03	Sandviksveien 52	2024-08-09 00:00:00	58,6	66,2	-6,0	45	
ST01	Høvikveien 2C	2024-08-08 23:30:00	57,5	76,9	-6,0	45	
ST02	Kirkeveien 4	2024-08-08 23:30:00	51,3	76,6	-6,0	45	
ST04	Sandviksveien 70	2024-08-08 23:30:00	58,0	67,7	-6,0	45	
ST03	Sandviksveien 52	2024-08-08 23:30:00	59,5	68,1	-6,0	45	
ST01	Høvikveien 2C	2024-08-08 23:00:00	57,4	72,5	-6,0	55	
ST02	Kirkeveien 4	2024-08-08 23:00:00	49,0	68,2	-6,0	55	
ST04	Sandviksveien 70	2024-08-08 23:00:00	58,7	68,5	-6,0	55	
ST03	Sandviksveien 52	2024-08-08 23:00:00	60,2	66,8	-6,0	55	

Namn	Adress	Datum	LEQ dBa	LMAX dBa	dbOffset	Larm	Kommentar
ST01	Høvikveien 2C	2024-08-08 22:30:00	58,7	75,4	-6,0	55	
ST02	Kirkeveien 4	2024-08-08 22:30:00	52,1	71,5	-6,0	55	
ST04	Sandviksveien 70	2024-08-08 22:30:00	58,9	69,9	-6,0	55	
ST03	Sandviksveien 52	2024-08-08 22:30:00	61,1	73,8	-6,0	55	
ST01	Høvikveien 2C	2024-08-08 22:00:00	59,9	79,0	-6,0	55	
ST02	Kirkeveien 4	2024-08-08 22:00:00	55,6	84,0	-6,0	55	
ST04	Sandviksveien 70	2024-08-08 22:00:00	58,9	69,0	-6,0	55	
ST03	Sandviksveien 52	2024-08-08 22:00:00	61,8	76,1	-6,0	55	
ST01	Høvikveien 2C	2024-08-08 21:30:00	59,6	74,6	-6,0	55	
ST02	Kirkeveien 4	2024-08-08 21:30:00	52,1	69,4	-6,0	55	
ST04	Sandviksveien 70	2024-08-08 21:30:00	59,2	67,6	-6,0	55	
ST03	Sandviksveien 52	2024-08-08 21:30:00	61,4	66,8	-6,0	55	
ST01	Høvikveien 2C	2024-08-08 21:00:00	60,3	70,3	-6,0	55	
ST02	Kirkeveien 4	2024-08-08 21:00:00	52,6	70,5	-6,0	55	
ST04	Sandviksveien 70	2024-08-08 21:00:00	60,3	73,2	-6,0	55	
ST03	Sandviksveien 52	2024-08-08 21:00:00	62,3	68,4	-6,0	55	
ST01	Høvikveien 2C	2024-08-08 20:30:00	60,6	74,5	-6,0	55	
ST02	Kirkeveien 4	2024-08-08 20:30:00	53,3	70,6	-6,0	55	
ST04	Sandviksveien 70	2024-08-08 20:30:00	60,1	71,0	-6,0	55	
ST03	Sandviksveien 52	2024-08-08 20:30:00	62,4	70,7	-6,0	55	
ST01	Høvikveien 2C	2024-08-08 20:00:00	60,8	76,7	-6,0	55	
ST02	Kirkeveien 4	2024-08-08 20:00:00	52,8	72,6	-6,0	55	
ST04	Sandviksveien 70	2024-08-08 20:00:00	60,5	68,6	-6,0	55	
ST03	Sandviksveien 52	2024-08-08 20:00:00	62,8	76,2	-6,0	55	
ST01	Høvikveien 2C	2024-08-08 19:30:00	60,7	73,3	-6,0	55	
ST02	Kirkeveien 4	2024-08-08 19:30:00	53,0	68,7	-6,0	55	
ST04	Sandviksveien 70	2024-08-08 19:30:00	60,4	68,6	-6,0	55	
ST03	Sandviksveien 52	2024-08-08 19:30:00	64,8	82,2	-6,0	55	
ST01	Høvikveien 2C	2024-08-08 19:00:00	61,1	73,0	-6,0	60	
ST02	Kirkeveien 4	2024-08-08 19:00:00	53,1	67,9	-6,0	60	
ST04	Sandviksveien 70	2024-08-08 19:00:00	60,5	71,9	-6,0	60	
ST03	Sandviksveien 52	2024-08-08 19:00:00	67,1	83,5	-6,0	60	
ST01	Høvikveien 2C	2024-08-08 18:30:00	61,3	71,4	-6,0	60	
ST02	Kirkeveien 4	2024-08-08 18:30:00	57,7	92,2	-6,0	60	
ST04	Sandviksveien 70	2024-08-08 18:30:00	60,4	70,9	-6,0	60	
ST03	Sandviksveien 52	2024-08-08 18:30:00	63,7	77,7	-6,0	60	
ST01	Høvikveien 2C	2024-08-08 18:00:00	62,0	81,4	-6,0	60	
ST02	Kirkeveien 4	2024-08-08 18:00:00	55,5	78,5	-6,0	60	
ST04	Sandviksveien 70	2024-08-08 18:00:00	60,7	66,4	-6,0	60	
ST03	Sandviksveien 52	2024-08-08 18:00:00	63,6	68,6	-6,0	60	
ST01	Høvikveien 2C	2024-08-08 17:30:00	61,9	76,6	-6,0	60	
ST02	Kirkeveien 4	2024-08-08 17:30:00	54,7	72,8	-6,0	60	
ST04	Sandviksveien 70	2024-08-08 17:30:00	61,0	76,5	-6,0	60	
ST03	Sandviksveien 52	2024-08-08 17:30:00	64,2	81,8	-6,0	60	

Namn	Adress	Datum	LEQ dBa	LMAX dBa	dbOffset	Larm	Kommentar
ST01	Høvikveien 2C	2024-08-08 17:00:00	60,6	75,4	-6,0	60	
ST02	Kirkeveien 4	2024-08-08 17:00:00	53,0	70,8	-6,0	60	
ST04	Sandviksveien 70	2024-08-08 17:00:00	61,1	82,4	-6,0	60	
ST03	Sandviksveien 52	2024-08-08 17:00:00	62,6	75,6	-6,0	60	
ST01	Høvikveien 2C	2024-08-08 16:30:00	60,2	78,8	-6,0	60	
ST02	Kirkeveien 4	2024-08-08 16:30:00	55,4	81,7	-6,0	60	
ST04	Sandviksveien 70	2024-08-08 16:30:00	58,2	74,2	-6,0	60	
ST03	Sandviksveien 52	2024-08-08 16:30:00	59,6	66,4	-6,0	60	
ST01	Høvikveien 2C	2024-08-08 16:00:00	58,8	71,5	-6,0	60	
ST02	Kirkeveien 4	2024-08-08 16:00:00	51,6	70,2	-6,0	60	
ST04	Sandviksveien 70	2024-08-08 16:00:00	57,0	72,3	-6,0	60	
ST03	Sandviksveien 52	2024-08-08 16:00:00	60,9	81,3	-6,0	60	
ST01	Høvikveien 2C	2024-08-08 15:30:00	59,0	72,9	-6,0	60	
ST02	Kirkeveien 4	2024-08-08 15:30:00	52,4	70,2	-6,0	60	
ST04	Sandviksveien 70	2024-08-08 15:30:00	57,2	71,4	-6,0	60	
ST03	Sandviksveien 52	2024-08-08 15:30:00	62,2	80,6	-6,0	60	
ST01	Høvikveien 2C	2024-08-08 15:00:00	60,5	76,9	-6,0	60	
ST02	Kirkeveien 4	2024-08-08 15:00:00	52,7	71,1	-6,0	60	
ST04	Sandviksveien 70	2024-08-08 15:00:00	57,9	71,7	-6,0	60	
ST03	Sandviksveien 52	2024-08-08 15:00:00	60,9	67,5	-6,0	60	
ST01	Høvikveien 2C	2024-08-08 14:30:00	60,4	72,6	-6,0	60	
ST02	Kirkeveien 4	2024-08-08 14:30:00	54,1	70,2	-6,0	60	
ST04	Sandviksveien 70	2024-08-08 14:30:00	59,5	65,9	-6,0	60	
ST03	Sandviksveien 52	2024-08-08 14:30:00	62,7	76,0	-6,0	60	
ST01	Høvikveien 2C	2024-08-08 14:00:00	61,5	79,1	-6,0	60	
ST02	Kirkeveien 4	2024-08-08 14:00:00	54,9	76,4	-6,0	60	
ST04	Sandviksveien 70	2024-08-08 14:00:00	60,6	68,0	-6,0	60	
ST03	Sandviksveien 52	2024-08-08 14:00:00	63,9	73,9	-6,0	60	
ST01	Høvikveien 2C	2024-08-08 13:30:00	62,1	76,9	-6,0	60	
ST02	Kirkeveien 4	2024-08-08 13:30:00	55,1	73,8	-6,0	60	
ST04	Sandviksveien 70	2024-08-08 13:30:00	60,5	69,5	-6,0	60	
ST03	Sandviksveien 52	2024-08-08 13:30:00	65,1	84,0	-6,0	60	
ST01	Høvikveien 2C	2024-08-08 13:00:00	62,2	80,4	-6,0	60	
ST02	Kirkeveien 4	2024-08-08 13:00:00	55,9	81,3	-6,0	60	
ST04	Sandviksveien 70	2024-08-08 13:00:00	60,9	68,0	-6,0	60	
ST03	Sandviksveien 52	2024-08-08 13:00:00	65,3	87,1	-6,0	60	
ST01	Høvikveien 2C	2024-08-08 12:30:00	62,0	71,2	-6,0	60	
ST02	Kirkeveien 4	2024-08-08 12:30:00	54,2	69,5	-6,0	60	
ST04	Sandviksveien 70	2024-08-08 12:30:00	61,3	67,1	-6,0	60	
ST03	Sandviksveien 52	2024-08-08 12:30:00	67,4	80,5	-6,0	60	
ST01	Høvikveien 2C	2024-08-08 12:00:00	61,6	71,7	-6,0	60	
ST02	Kirkeveien 4	2024-08-08 12:00:00	54,0	68,1	-6,0	60	
ST04	Sandviksveien 70	2024-08-08 12:00:00	61,2	70,4	-6,0	60	
ST03	Sandviksveien 52	2024-08-08 12:00:00	65,4	78,7	-6,0	60	

Namn	Adress	Datum	LEQ dBa	LMAX dBa	dbOffset	Larm	Kommentar
ST01	Høvikveien 2C	2024-08-08 11:30:00	61,7	79,5	-6,0	60	
ST02	Kirkeveien 4	2024-08-08 11:30:00	54,2	78,1	-6,0	60	
ST04	Sandviksveien 70	2024-08-08 11:30:00	60,9	67,7	-6,0	60	
ST03	Sandviksveien 52	2024-08-08 11:30:00	63,7	68,5	-6,0	60	
ST01	Høvikveien 2C	2024-08-08 11:00:00	61,6	73,5	-6,0	60	
ST02	Kirkeveien 4	2024-08-08 11:00:00	52,9	67,9	-6,0	60	
ST04	Sandviksveien 70	2024-08-08 11:00:00	61,4	68,7	-6,0	60	
ST03	Sandviksveien 52	2024-08-08 11:00:00	64,0	69,7	-6,0	60	
ST01	Høvikveien 2C	2024-08-08 10:30:00	60,4	77,3	-6,0	60	
ST02	Kirkeveien 4	2024-08-08 10:30:00	52,5	70,5	-6,0	60	
ST04	Sandviksveien 70	2024-08-08 10:30:00	59,8	66,3	-6,0	60	
ST03	Sandviksveien 52	2024-08-08 10:30:00	64,1	83,5	-6,0	60	
ST01	Høvikveien 2C	2024-08-08 10:00:00	59,6	80,2	-6,0	60	
ST02	Kirkeveien 4	2024-08-08 10:00:00	54,9	84,0	-6,0	60	
ST04	Sandviksveien 70	2024-08-08 10:00:00	60,6	75,4	-6,0	60	
ST03	Sandviksveien 52	2024-08-08 10:00:00	64,7	84,0	-6,0	60	
ST01	Høvikveien 2C	2024-08-08 09:30:00	59,1	76,2	-6,0	60	
ST02	Kirkeveien 4	2024-08-08 09:30:00	50,8	68,2	-6,0	60	
ST04	Sandviksveien 70	2024-08-08 09:30:00	60,2	67,7	-6,0	60	
ST03	Sandviksveien 52	2024-08-08 09:30:00	66,3	80,5	-6,0	60	
ST01	Høvikveien 2C	2024-08-08 09:00:00	59,1	71,3	-6,0	60	
ST02	Kirkeveien 4	2024-08-08 09:00:00	50,9	69,5	-6,0	60	
ST04	Sandviksveien 70	2024-08-08 09:00:00	59,5	67,5	-6,0	60	
ST03	Sandviksveien 52	2024-08-08 09:00:00	65,1	82,5	-6,0	60	
ST01	Høvikveien 2C	2024-08-08 08:30:00	60,4	78,5	-6,0	60	
ST02	Kirkeveien 4	2024-08-08 08:30:00	53,4	78,0	-6,0	60	
ST04	Sandviksveien 70	2024-08-08 08:30:00	59,3	68,2	-6,0	60	
ST03	Sandviksveien 52	2024-08-08 08:30:00	65,9	82,0	-6,0	60	
ST01	Høvikveien 2C	2024-08-08 08:00:00	59,6	73,7	-6,0	60	
ST02	Kirkeveien 4	2024-08-08 08:00:00	53,8	72,8	-6,0	60	
ST04	Sandviksveien 70	2024-08-08 08:00:00	59,0	69,4	-6,0	60	
ST03	Sandviksveien 52	2024-08-08 08:00:00	66,3	82,0	-6,0	60	
ST01	Høvikveien 2C	2024-08-08 07:30:00	61,3	77,0	-6,0	60	
ST02	Kirkeveien 4	2024-08-08 07:30:00	58,2	80,2	-6,0	60	
ST04	Sandviksveien 70	2024-08-08 07:30:00	62,7	69,6	-6,0	60	
ST03	Sandviksveien 52	2024-08-08 07:30:00	64,5	75,6	-6,0	60	
ST01	Høvikveien 2C	2024-08-08 07:00:00	61,1	77,2	-6,0	60	
ST02	Kirkeveien 4	2024-08-08 07:00:00	56,7	80,4	-6,0	60	
ST04	Sandviksveien 70	2024-08-08 07:00:00	63,1	69,6	-6,0	60	
ST03	Sandviksveien 52	2024-08-08 07:00:00	64,5	73,5	-6,0	60	
ST01	Høvikveien 2C	2024-08-08 06:30:00	60,7	81,7	-6,0	45	
ST02	Kirkeveien 4	2024-08-08 06:30:00	52,1	76,8	-6,0	45	
ST04	Sandviksveien 70	2024-08-08 06:30:00	63,7	75,6	-6,0	45	
ST03	Sandviksveien 52	2024-08-08 06:30:00	65,1	71,2	-6,0	45	

Namn	Adress	Datum	LEQ dBa	LMAX dBa	dbOffset	Larm	Kommentar
ST01	Høvikveien 2C	2024-08-08 06:00:00	59,2	70,6	-6,0	45	
ST02	Kirkeveien 4	2024-08-08 06:00:00	50,0	69,5	-6,0	45	
ST04	Sandviksveien 70	2024-08-08 06:00:00	63,0	69,6	-6,0	45	
ST03	Sandviksveien 52	2024-08-08 06:00:00	63,3	68,6	-6,0	45	
ST01	Høvikveien 2C	2024-08-08 05:30:00	57,5	69,0	-6,0	45	
ST02	Kirkeveien 4	2024-08-08 05:30:00	48,7	69,7	-6,0	45	
ST04	Sandviksveien 70	2024-08-08 05:30:00	60,0	68,0	-6,0	45	
ST03	Sandviksveien 52	2024-08-08 05:30:00	60,8	67,8	-6,0	45	
ST01	Høvikveien 2C	2024-08-08 05:00:00	55,8	77,5	-6,0	45	
ST02	Kirkeveien 4	2024-08-08 05:00:00	51,1	79,9	-6,0	45	
ST04	Sandviksveien 70	2024-08-08 05:00:00	56,6	68,0	-6,0	45	
ST03	Sandviksveien 52	2024-08-08 05:00:00	57,9	67,2	-6,0	45	
ST01	Høvikveien 2C	2024-08-08 04:30:00	55,1	64,3	-6,0	45	
ST02	Kirkeveien 4	2024-08-08 04:30:00	46,7	61,4	-6,0	45	
ST04	Sandviksveien 70	2024-08-08 04:30:00	56,4	68,1	-6,0	45	
ST03	Sandviksveien 52	2024-08-08 04:30:00	57,6	67,6	-6,0	45	
ST01	Høvikveien 2C	2024-08-08 04:00:00	53,5	64,9	-6,0	45	
ST02	Kirkeveien 4	2024-08-08 04:00:00	44,9	52,8	-6,0	45	
ST04	Sandviksveien 70	2024-08-08 04:00:00	55,1	68,6	-6,0	45	
ST03	Sandviksveien 52	2024-08-08 04:00:00	55,9	65,7	-6,0	45	
ST01	Høvikveien 2C	2024-08-08 03:30:00	63,1	83,7	-6,0	45	
ST02	Kirkeveien 4	2024-08-08 03:30:00	63,2	83,5	-6,0	45	
ST04	Sandviksveien 70	2024-08-08 03:30:00	54,7	68,4	-6,0	45	
ST03	Sandviksveien 52	2024-08-08 03:30:00	57,6	73,1	-6,0	45	
ST01	Høvikveien 2C	2024-08-08 03:00:00	63,0	89,5	-6,0	45	
ST02	Kirkeveien 4	2024-08-08 03:00:00	61,5	82,9	-6,0	45	
ST04	Sandviksveien 70	2024-08-08 03:00:00	53,9	69,9	-6,0	45	
ST03	Sandviksveien 52	2024-08-08 03:00:00	57,0	71,8	-6,0	45	
ST01	Høvikveien 2C	2024-08-08 02:30:00	52,8	63,6	-6,0	45	
ST02	Kirkeveien 4	2024-08-08 02:30:00	44,6	51,7	-6,0	45	
ST04	Sandviksveien 70	2024-08-08 02:30:00	53,7	67,9	-6,0	45	
ST03	Sandviksveien 52	2024-08-08 02:30:00	55,6	65,8	-6,0	45	
ST01	Høvikveien 2C	2024-08-08 02:00:00	52,3	61,9	-6,0	45	
ST02	Kirkeveien 4	2024-08-08 02:00:00	44,5	52,9	-6,0	45	
ST04	Sandviksveien 70	2024-08-08 02:00:00	52,6	66,5	-6,0	45	
ST03	Sandviksveien 52	2024-08-08 02:00:00	55,5	64,5	-6,0	45	
ST01	Høvikveien 2C	2024-08-08 01:30:00	53,9	72,6	-6,0	45	
ST02	Kirkeveien 4	2024-08-08 01:30:00	46,1	69,7	-6,0	45	
ST04	Sandviksveien 70	2024-08-08 01:30:00	53,5	67,1	-6,0	45	
ST03	Sandviksveien 52	2024-08-08 01:30:00	55,7	65,7	-6,0	45	
ST01	Høvikveien 2C	2024-08-08 01:00:00	54,8	71,5	-6,0	45	
ST02	Kirkeveien 4	2024-08-08 01:00:00	47,0	67,0	-6,0	45	
ST04	Sandviksveien 70	2024-08-08 01:00:00	54,7	69,1	-6,0	45	
ST03	Sandviksveien 52	2024-08-08 01:00:00	56,8	65,1	-6,0	45	

Namn	Adress	Datum	LEQ dBa	LMAX dBa	dbOffset	Larm	Kommentar
ST01	Høvikveien 2C	2024-08-08 00:30:00	55,3	75,2	-6,0	45	
ST02	Kirkeveien 4	2024-08-08 00:30:00	48,0	69,9	-6,0	45	
ST04	Sandviksveien 70	2024-08-08 00:30:00	55,0	67,8	-6,0	45	
ST03	Sandviksveien 52	2024-08-08 00:30:00	57,9	66,2	-6,0	45	
ST01	Høvikveien 2C	2024-08-08 00:00:00	57,5	71,1	-6,0	45	
ST02	Kirkeveien 4	2024-08-08 00:00:00	55,6	68,9	-6,0	45	
ST04	Sandviksveien 70	2024-08-08 00:00:00	56,1	67,0	-6,0	45	
ST03	Sandviksveien 52	2024-08-08 00:00:00	59,1	66,1	-6,0	45	
ST01	Høvikveien 2C	2024-08-07 23:30:00	57,3	73,2	-6,0	45	
ST02	Kirkeveien 4	2024-08-07 23:30:00	50,2	69,2	-6,0	45	
ST04	Sandviksveien 70	2024-08-07 23:30:00	56,5	67,8	-6,0	45	
ST03	Sandviksveien 52	2024-08-07 23:30:00	59,9	67,4	-6,0	45	
ST01	Høvikveien 2C	2024-08-07 23:00:00	57,9	75,7	-6,0	55	
ST02	Kirkeveien 4	2024-08-07 23:00:00	50,8	70,4	-6,0	55	
ST04	Sandviksveien 70	2024-08-07 23:00:00	57,5	66,5	-6,0	55	
ST03	Sandviksveien 52	2024-08-07 23:00:00	60,4	68,2	-6,0	55	
ST01	Høvikveien 2C	2024-08-07 22:30:00	58,1	79,8	-6,0	55	
ST02	Kirkeveien 4	2024-08-07 22:30:00	52,3	72,8	-6,0	55	
ST03	Sandviksveien 52	2024-08-07 22:30:00	61,3	67,2	-6,0	55	
ST04	Sandviksveien 70	2024-08-07 22:30:00	59,5	68,0	-6,0	55	
ST01	Høvikveien 2C	2024-08-07 22:00:00	58,4	71,4	-6,0	55	
ST02	Kirkeveien 4	2024-08-07 22:00:00	52,9	68,2	-6,0	55	
ST03	Sandviksveien 52	2024-08-07 22:00:00	61,6	68,6	-6,0	55	
ST04	Sandviksveien 70	2024-08-07 22:00:00	59,4	67,0	-6,0	55	
ST01	Høvikveien 2C	2024-08-07 21:30:00	58,3	69,8	-6,0	55	
ST02	Kirkeveien 4	2024-08-07 21:30:00	51,0	69,3	-6,0	55	
ST03	Sandviksveien 52	2024-08-07 21:30:00	62,0	69,4	-6,0	55	
ST04	Sandviksveien 70	2024-08-07 21:30:00	59,8	67,4	-6,0	55	
ST01	Høvikveien 2C	2024-08-07 21:00:00	60,2	76,1	-6,0	55	
ST02	Kirkeveien 4	2024-08-07 21:00:00	54,5	82,2	-6,0	55	
ST03	Sandviksveien 52	2024-08-07 21:00:00	63,1	68,2	-6,0	55	
ST04	Sandviksveien 70	2024-08-07 21:00:00	60,3	66,3	-6,0	55	
ST01	Høvikveien 2C	2024-08-07 20:30:00	65,6	84,8	-6,0	55	
ST02	Kirkeveien 4	2024-08-07 20:30:00	59,5	79,9	-6,0	55	
ST03	Sandviksveien 52	2024-08-07 20:30:00	63,7	76,2	-6,0	55	
ST04	Sandviksveien 70	2024-08-07 20:30:00	60,0	69,0	-6,0	55	
ST01	Høvikveien 2C	2024-08-07 20:00:00	61,0	74,0	-6,0	55	
ST02	Kirkeveien 4	2024-08-07 20:00:00	54,2	72,4	-6,0	55	
ST03	Sandviksveien 52	2024-08-07 20:00:00	63,4	80,7	-6,0	55	
ST04	Sandviksveien 70	2024-08-07 20:00:00	60,5	72,6	-6,0	55	
ST01	Høvikveien 2C	2024-08-07 19:30:00	60,9	78,6	-6,0	55	
ST02	Kirkeveien 4	2024-08-07 19:30:00	53,3	73,7	-6,0	55	
ST03	Sandviksveien 52	2024-08-07 19:30:00	63,4	72,8	-6,0	55	
ST04	Sandviksveien 70	2024-08-07 19:30:00	60,6	70,3	-6,0	55	

Namn	Adress	Datum	LEQ dBa	LMAX dBa	dbOffset	Larm	Kommentar
ST01	Høvikveien 2C	2024-08-07 19:00:00	61,0	78,5	-6,0	60	
ST02	Kirkeveien 4	2024-08-07 19:00:00	53,1	75,9	-6,0	60	
ST03	Sandviksveien 52	2024-08-07 19:00:00	64,2	74,0	-6,0	60	
ST04	Sandviksveien 70	2024-08-07 19:00:00	60,8	70,0	-6,0	60	
ST01	Høvikveien 2C	2024-08-07 18:30:00	61,5	78,1	-6,0	60	
ST02	Kirkeveien 4	2024-08-07 18:30:00	54,8	77,5	-6,0	60	
ST03	Sandviksveien 52	2024-08-07 18:30:00	63,5	73,2	-6,0	60	
ST04	Sandviksveien 70	2024-08-07 18:30:00	60,7	66,8	-6,0	60	
ST01	Høvikveien 2C	2024-08-07 18:00:00	60,5	72,7	-6,0	60	
ST02	Kirkeveien 4	2024-08-07 18:00:00	52,7	73,2	-6,0	60	
ST03	Sandviksveien 52	2024-08-07 18:00:00	64,4	79,8	-6,0	60	
ST04	Sandviksveien 70	2024-08-07 18:00:00	61,3	68,8	-6,0	60	
ST01	Høvikveien 2C	2024-08-07 17:30:00	60,8	73,5	-6,0	60	
ST02	Kirkeveien 4	2024-08-07 17:30:00	52,8	73,8	-6,0	60	
ST03	Sandviksveien 52	2024-08-07 17:30:00	65,6	83,0	-6,0	60	
ST04	Sandviksveien 70	2024-08-07 17:30:00	60,8	67,9	-6,0	60	
ST01	Høvikveien 2C	2024-08-07 17:00:00	60,5	75,5	-6,0	60	
ST02	Kirkeveien 4	2024-08-07 17:00:00	51,9	71,4	-6,0	60	
ST03	Sandviksveien 52	2024-08-07 17:00:00	63,6	73,5	-6,0	60	
ST04	Sandviksveien 70	2024-08-07 17:00:00	59,3	68,4	-6,0	60	
ST01	Høvikveien 2C	2024-08-07 16:30:00	60,8	76,4	-6,0	60	
ST02	Kirkeveien 4	2024-08-07 16:30:00	61,9	89,9	-6,0	60	
ST03	Sandviksveien 52	2024-08-07 16:30:00	63,7	80,4	-6,0	60	
ST04	Sandviksveien 70	2024-08-07 16:30:00	59,4	67,6	-6,0	60	
ST01	Høvikveien 2C	2024-08-07 16:00:00	60,1	76,7	-6,0	60	
ST02	Kirkeveien 4	2024-08-07 16:00:00	52,1	71,7	-6,0	60	
ST03	Sandviksveien 52	2024-08-07 16:00:00	61,9	75,4	-6,0	60	
ST04	Sandviksveien 70	2024-08-07 16:00:00	58,3	65,7	-6,0	60	
ST01	Høvikveien 2C	2024-08-07 15:30:00	59,9	78,0	-6,0	60	
ST02	Kirkeveien 4	2024-08-07 15:30:00	55,2	82,0	-6,0	60	
ST03	Sandviksveien 52	2024-08-07 15:30:00	61,9	76,1	-6,0	60	
ST04	Sandviksveien 70	2024-08-07 15:30:00	57,9	67,9	-6,0	60	
ST01	Høvikveien 2C	2024-08-07 15:00:00	61,2	73,6	-6,0	60	
ST02	Kirkeveien 4	2024-08-07 15:00:00	53,7	70,0	-6,0	60	
ST03	Sandviksveien 52	2024-08-07 15:00:00	63,4	73,5	-6,0	60	
ST04	Sandviksveien 70	2024-08-07 15:00:00	60,6	70,7	-6,0	60	
ST01	Høvikveien 2C	2024-08-07 14:30:00	61,0	74,8	-6,0	60	
ST02	Kirkeveien 4	2024-08-07 14:30:00	54,8	74,7	-6,0	60	
ST03	Sandviksveien 52	2024-08-07 14:30:00	64,1	76,6	-6,0	60	
ST04	Sandviksveien 70	2024-08-07 14:30:00	60,2	71,6	-6,0	60	
ST01	Høvikveien 2C	2024-08-07 14:00:00	60,6	74,4	-6,0	60	
ST02	Kirkeveien 4	2024-08-07 14:00:00	52,2	69,0	-6,0	60	
ST03	Sandviksveien 52	2024-08-07 14:00:00	64,4	90,7	-6,0	60	
ST04	Sandviksveien 70	2024-08-07 14:00:00	60,4	71,0	-6,0	60	



Namn	Adress	Datum	LEQ dBa	LMAX dBa	dbOffset	Larm	Kommentar
ST01	Høvikveien 2C	2024-08-07 13:30:00	60,5	78,4	-6,0	60	
ST02	Kirkeveien 4	2024-08-07 13:30:00	51,8	69,7	-6,0	60	
ST03	Sandviksveien 52	2024-08-07 13:30:00	63,4	74,9	-6,0	60	
ST04	Sandviksveien 70	2024-08-07 13:30:00	59,9	66,2	-6,0	60	
ST01	Høvikveien 2C	2024-08-07 13:00:00	60,3	79,2	-6,0	60	
ST02	Kirkeveien 4	2024-08-07 13:00:00	52,9	76,2	-6,0	60	
ST03	Sandviksveien 52	2024-08-07 13:00:00	63,3	77,6	-6,0	60	
ST04	Sandviksveien 70	2024-08-07 13:00:00	61,0	66,6	-6,0	60	
ST01	Høvikveien 2C	2024-08-07 12:30:00	60,7	79,2	-6,0	60	
ST02	Kirkeveien 4	2024-08-07 12:30:00	55,3	83,5	-6,0	60	
ST03	Sandviksveien 52	2024-08-07 12:30:00	63,6	74,3	-6,0	60	
ST04	Sandviksveien 70	2024-08-07 12:30:00	61,3	68,4	-6,0	60	
ST01	Høvikveien 2C	2024-08-07 12:00:00	59,8	75,0	-6,0	60	
ST02	Kirkeveien 4	2024-08-07 12:00:00	51,2	69,1	-6,0	60	
ST03	Sandviksveien 52	2024-08-07 12:00:00	63,8	71,9	-6,0	60	
ST04	Sandviksveien 70	2024-08-07 12:00:00	62,3	76,9	-6,0	60	
ST01	Høvikveien 2C	2024-08-07 11:30:00	59,7	73,9	-6,0	60	
ST02	Kirkeveien 4	2024-08-07 11:30:00	50,7	69,0	-6,0	60	
ST03	Sandviksveien 52	2024-08-07 11:30:00	63,9	68,6	-6,0	60	
ST04	Sandviksveien 70	2024-08-07 11:30:00	62,3	67,4	-6,0	60	
ST01	Høvikveien 2C	2024-08-07 11:00:00	60,3	74,8	-6,0	60	
ST02	Kirkeveien 4	2024-08-07 11:00:00	51,2	70,3	-6,0	60	
ST03	Sandviksveien 52	2024-08-07 11:00:00	64,7	86,5	-6,0	60	
ST04	Sandviksveien 70	2024-08-07 11:00:00	61,7	69,2	-6,0	60	
ST01	Høvikveien 2C	2024-08-07 10:30:00	60,4	76,7	-6,0	60	
ST02	Kirkeveien 4	2024-08-07 10:30:00	53,0	77,1	-6,0	60	
ST03	Sandviksveien 52	2024-08-07 10:30:00	66,9	81,3	-6,0	60	
ST04	Sandviksveien 70	2024-08-07 10:30:00	62,3	68,2	-6,0	60	
ST01	Høvikveien 2C	2024-08-07 10:00:00	60,2	76,7	-6,0	60	
ST02	Kirkeveien 4	2024-08-07 10:00:00	52,2	70,2	-6,0	60	
ST03	Sandviksveien 52	2024-08-07 10:00:00	66,6	78,7	-6,0	60	
ST04	Sandviksveien 70	2024-08-07 10:00:00	62,3	71,4	-6,0	60	
ST01	Høvikveien 2C	2024-08-07 09:30:00	60,6	73,0	-6,0	60	
ST02	Kirkeveien 4	2024-08-07 09:30:00	52,1	69,0	-6,0	60	
ST03	Sandviksveien 52	2024-08-07 09:30:00	64,5	79,5	-6,0	60	
ST04	Sandviksveien 70	2024-08-07 09:30:00	61,7	67,4	-6,0	60	
ST01	Høvikveien 2C	2024-08-07 09:00:00	59,4	79,9	-6,0	60	
ST02	Kirkeveien 4	2024-08-07 09:00:00	55,0	82,6	-6,0	60	
ST03	Sandviksveien 52	2024-08-07 09:00:00	64,8	82,7	-6,0	60	
ST04	Sandviksveien 70	2024-08-07 09:00:00	60,4	75,4	-6,0	60	
ST01	Høvikveien 2C	2024-08-07 08:30:00	58,2	78,2	-6,0	60	
ST02	Kirkeveien 4	2024-08-07 08:30:00	50,8	72,1	-6,0	60	
ST03	Sandviksveien 52	2024-08-07 08:30:00	64,5	79,2	-6,0	60	
ST04	Sandviksveien 70	2024-08-07 08:30:00	60,3	71,3	-6,0	60	

Namn	Adress	Datum	LEQ dBa	LMAX dBa	dbOffset	Larm	Kommentar
ST01	Høvikveien 2C	2024-08-07 08:00:00	58,0	77,3	-6,0	60	
ST02	Kirkeveien 4	2024-08-07 08:00:00	50,9	73,5	-6,0	60	
ST03	Sandviksveien 52	2024-08-07 08:00:00	66,0	85,2	-6,0	60	
ST04	Sandviksveien 70	2024-08-07 08:00:00	62,0	71,1	-6,0	60	
ST02	Kirkeveien 4	2024-08-07 07:30:00	51,3	73,4	-6,0	60	
ST01	Høvikveien 2C	2024-08-07 07:30:00	59,8	72,4	-6,0	60	
ST03	Sandviksveien 52	2024-08-07 07:30:00	65,8	72,8	-6,0	60	
ST04	Sandviksveien 70	2024-08-07 07:30:00	64,9	71,6	-6,0	60	
ST02	Kirkeveien 4	2024-08-07 07:00:00	52,0	75,9	-6,0	60	
ST01	Høvikveien 2C	2024-08-07 07:00:00	59,6	77,9	-6,0	60	
ST03	Sandviksveien 52	2024-08-07 07:00:00	64,8	70,2	-6,0	60	
ST04	Sandviksveien 70	2024-08-07 07:00:00	63,8	68,5	-6,0	60	
ST02	Kirkeveien 4	2024-08-07 06:30:00	50,6	68,7	-6,0	45	
ST01	Høvikveien 2C	2024-08-07 06:30:00	59,3	73,0	-6,0	45	
ST03	Sandviksveien 52	2024-08-07 06:30:00	64,5	72,3	-6,0	45	
ST04	Sandviksveien 70	2024-08-07 06:30:00	64,0	75,4	-6,0	45	
ST02	Kirkeveien 4	2024-08-07 06:00:00	50,4	69,3	-6,0	45	
ST01	Høvikveien 2C	2024-08-07 06:00:00	58,5	74,8	-6,0	45	
ST03	Sandviksveien 52	2024-08-07 06:00:00	63,2	69,2	-6,0	45	
ST04	Sandviksveien 70	2024-08-07 06:00:00	62,6	67,4	-6,0	45	
ST02	Kirkeveien 4	2024-08-07 05:30:00	48,3	71,7	-6,0	45	
ST01	Høvikveien 2C	2024-08-07 05:30:00	56,9	75,8	-6,0	45	
ST03	Sandviksveien 52	2024-08-07 05:30:00	60,4	68,0	-6,0	45	
ST04	Sandviksveien 70	2024-08-07 05:30:00	60,1	68,6	-6,0	45	
ST02	Kirkeveien 4	2024-08-07 05:00:00	45,8	71,2	-6,0	45	
ST01	Høvikveien 2C	2024-08-07 05:00:00	54,6	76,8	-6,0	45	
ST03	Sandviksveien 52	2024-08-07 05:00:00	57,8	67,9	-6,0	45	
ST04	Sandviksveien 70	2024-08-07 05:00:00	56,7	67,9	-6,0	45	
ST02	Kirkeveien 4	2024-08-07 04:30:00	42,6	51,0	-6,0	45	
ST01	Høvikveien 2C	2024-08-07 04:30:00	52,2	61,4	-6,0	45	
ST03	Sandviksveien 52	2024-08-07 04:30:00	56,5	67,0	-6,0	45	
ST04	Sandviksveien 70	2024-08-07 04:30:00	55,5	67,8	-6,0	45	
ST02	Kirkeveien 4	2024-08-07 04:00:00	42,3	49,2	-6,0	45	
ST01	Høvikveien 2C	2024-08-07 04:00:00	52,0	63,3	-6,0	45	
ST03	Sandviksveien 52	2024-08-07 04:00:00	56,4	69,7	-6,0	45	
ST04	Sandviksveien 70	2024-08-07 04:00:00	55,4	68,5	-6,0	45	
ST02	Kirkeveien 4	2024-08-07 03:30:00	42,7	60,0	-6,0	45	
ST01	Høvikveien 2C	2024-08-07 03:30:00	50,6	61,2	-6,0	45	
ST03	Sandviksveien 52	2024-08-07 03:30:00	54,7	66,6	-6,0	45	
ST04	Sandviksveien 70	2024-08-07 03:30:00	53,9	68,3	-6,0	45	
ST02	Kirkeveien 4	2024-08-07 03:00:00	43,0	52,1	-6,0	45	
ST01	Høvikveien 2C	2024-08-07 03:00:00	50,5	61,0	-6,0	45	
ST03	Sandviksveien 52	2024-08-07 03:00:00	54,4	65,0	-6,0	45	
ST04	Sandviksveien 70	2024-08-07 03:00:00	54,4	69,1	-6,0	45	

Namn	Adress	Datum	LEQ dBa	LMAX dBa	dbOffset	Larm	Kommentar
ST02	Kirkeveien 4	2024-08-07 02:30:00	41,4	48,1	-6,0	45	
ST01	Høvikveien 2C	2024-08-07 02:30:00	50,4	60,5	-6,0	45	
ST03	Sandviksveien 52	2024-08-07 02:30:00	54,2	65,2	-6,0	45	
ST04	Sandviksveien 70	2024-08-07 02:30:00	53,6	68,3	-6,0	45	
ST02	Kirkeveien 4	2024-08-07 02:00:00	42,0	48,7	-6,0	45	
ST01	Høvikveien 2C	2024-08-07 02:00:00	50,7	61,3	-6,0	45	
ST03	Sandviksveien 52	2024-08-07 02:00:00	54,8	64,7	-6,0	45	
ST04	Sandviksveien 70	2024-08-07 02:00:00	53,8	68,8	-6,0	45	
ST02	Kirkeveien 4	2024-08-07 01:30:00	44,3	65,9	-6,0	45	
ST01	Høvikveien 2C	2024-08-07 01:30:00	52,0	68,7	-6,0	45	
ST03	Sandviksveien 52	2024-08-07 01:30:00	55,7	65,4	-6,0	45	
ST04	Sandviksveien 70	2024-08-07 01:30:00	54,5	68,5	-6,0	45	
ST02	Kirkeveien 4	2024-08-07 01:00:00	46,7	71,8	-6,0	45	
ST01	Høvikveien 2C	2024-08-07 01:00:00	53,0	74,9	-6,0	45	
ST03	Sandviksveien 52	2024-08-07 01:00:00	56,0	64,8	-6,0	45	
ST04	Sandviksveien 70	2024-08-07 01:00:00	55,1	68,6	-6,0	45	
ST02	Kirkeveien 4	2024-08-07 00:30:00	45,3	68,5	-6,0	45	
ST01	Høvikveien 2C	2024-08-07 00:30:00	52,2	71,8	-6,0	45	
ST03	Sandviksveien 52	2024-08-07 00:30:00	55,8	65,2	-6,0	45	
ST04	Sandviksveien 70	2024-08-07 00:30:00	54,8	67,3	-6,0	45	
ST02	Kirkeveien 4	2024-08-07 00:00:00	46,9	68,3	-6,0	45	
ST01	Høvikveien 2C	2024-08-07 00:00:00	54,8	76,4	-6,0	45	
ST03	Sandviksveien 52	2024-08-07 00:00:00	57,7	65,8	-6,0	45	
ST04	Sandviksveien 70	2024-08-07 00:00:00	56,4	67,6	-6,0	45	
ST02	Kirkeveien 4	2024-08-06 23:30:00	49,0	72,1	-6,0	45	
ST01	Høvikveien 2C	2024-08-06 23:30:00	55,8	72,7	-6,0	45	
ST03	Sandviksveien 52	2024-08-06 23:30:00	58,3	77,8	-6,0	45	
ST04	Sandviksveien 70	2024-08-06 23:30:00	56,8	67,1	-6,0	45	
ST02	Kirkeveien 4	2024-08-06 23:00:00	52,6	80,1	-6,0	55	
ST01	Høvikveien 2C	2024-08-06 23:00:00	56,9	76,9	-6,0	55	
ST03	Sandviksveien 52	2024-08-06 23:00:00	58,3	65,2	-6,0	55	
ST04	Sandviksveien 70	2024-08-06 23:00:00	56,7	70,1	-6,0	55	
ST02	Kirkeveien 4	2024-08-06 22:30:00	51,0	70,1	-6,0	55	
ST01	Høvikveien 2C	2024-08-06 22:30:00	58,2	74,4	-6,0	55	
ST03	Sandviksveien 52	2024-08-06 22:30:00	59,8	70,4	-6,0	55	
ST04	Sandviksveien 70	2024-08-06 22:30:00	58,1	67,8	-6,0	55	
ST02	Kirkeveien 4	2024-08-06 22:00:00	50,3	69,3	-6,0	55	
ST01	Høvikveien 2C	2024-08-06 22:00:00	58,3	72,4	-6,0	55	
ST03	Sandviksveien 52	2024-08-06 22:00:00	60,6	65,9	-6,0	55	
ST04	Sandviksveien 70	2024-08-06 22:00:00	58,6	69,0	-6,0	55	
ST02	Kirkeveien 4	2024-08-06 21:30:00	51,6	69,6	-6,0	55	
ST01	Høvikveien 2C	2024-08-06 21:30:00	59,0	71,5	-6,0	55	
ST03	Sandviksveien 52	2024-08-06 21:30:00	61,2	68,0	-6,0	55	
ST04	Sandviksveien 70	2024-08-06 21:30:00	59,0	66,7	-6,0	55	

Namn	Adress	Datum	LEQ dBa	LMAX dBa	dbOffset	Larm	Kommentar
ST02	Kirkeveien 4	2024-08-06 21:00:00	52,2	74,7	-6,0	55	
ST01	Høvikveien 2C	2024-08-06 21:00:00	59,6	75,3	-6,0	55	
ST03	Sandviksveien 52	2024-08-06 21:00:00	61,6	68,0	-6,0	55	
ST04	Sandviksveien 70	2024-08-06 21:00:00	59,7	75,5	-6,0	55	
ST02	Kirkeveien 4	2024-08-06 20:30:00	53,0	77,7	-6,0	55	
ST01	Høvikveien 2C	2024-08-06 20:30:00	60,6	77,8	-6,0	55	
ST03	Sandviksveien 52	2024-08-06 20:30:00	62,5	70,6	-6,0	55	
ST04	Sandviksveien 70	2024-08-06 20:30:00	60,5	70,2	-6,0	55	
ST02	Kirkeveien 4	2024-08-06 20:00:00	55,4	90,1	-6,0	55	
ST01	Høvikveien 2C	2024-08-06 20:00:00	60,7	77,3	-6,0	55	
ST03	Sandviksveien 52	2024-08-06 20:00:00	64,7	82,3	-6,0	55	
ST04	Sandviksveien 70	2024-08-06 20:00:00	60,3	67,8	-6,0	55	
ST02	Kirkeveien 4	2024-08-06 19:30:00	52,6	69,8	-6,0	55	
ST01	Høvikveien 2C	2024-08-06 19:30:00	60,6	72,2	-6,0	55	
ST03	Sandviksveien 52	2024-08-06 19:30:00	65,9	85,4	-6,0	55	
ST04	Sandviksveien 70	2024-08-06 19:30:00	60,6	66,9	-6,0	55	
ST02	Kirkeveien 4	2024-08-06 19:00:00	55,1	82,4	-6,0	60	
ST01	Høvikveien 2C	2024-08-06 19:00:00	61,0	72,8	-6,0	60	
ST03	Sandviksveien 52	2024-08-06 19:00:00	65,3	89,5	-6,0	60	
ST04	Sandviksveien 70	2024-08-06 19:00:00	60,3	68,6	-6,0	60	
ST02	Kirkeveien 4	2024-08-06 18:30:00	54,8	79,0	-6,0	60	
ST01	Høvikveien 2C	2024-08-06 18:30:00	61,2	76,5	-6,0	60	
ST03	Sandviksveien 52	2024-08-06 18:30:00	66,4	79,8	-6,0	60	
ST04	Sandviksveien 70	2024-08-06 18:30:00	60,6	67,1	-6,0	60	
ST02	Kirkeveien 4	2024-08-06 18:00:00	53,6	69,7	-6,0	60	
ST01	Høvikveien 2C	2024-08-06 18:00:00	61,5	74,6	-6,0	60	
ST03	Sandviksveien 52	2024-08-06 18:00:00	66,1	82,9	-6,0	60	
ST04	Sandviksveien 70	2024-08-06 18:00:00	60,8	76,9	-6,0	60	
ST02	Kirkeveien 4	2024-08-06 17:30:00	52,9	69,7	-6,0	60	
ST01	Høvikveien 2C	2024-08-06 17:30:00	60,9	78,8	-6,0	60	
ST03	Sandviksveien 52	2024-08-06 17:30:00	65,6	84,2	-6,0	60	
ST04	Sandviksveien 70	2024-08-06 17:30:00	58,6	67,8	-6,0	60	
ST02	Kirkeveien 4	2024-08-06 17:00:00	53,6	77,2	-6,0	60	
ST01	Høvikveien 2C	2024-08-06 17:00:00	59,6	78,6	-6,0	60	
ST03	Sandviksveien 52	2024-08-06 17:00:00	62,6	80,2	-6,0	60	
ST04	Sandviksveien 70	2024-08-06 17:00:00	57,5	70,8	-6,0	60	
ST02	Kirkeveien 4	2024-08-06 16:30:00	53,4	78,7	-6,0	60	
ST01	Høvikveien 2C	2024-08-06 16:30:00	58,1	75,2	-6,0	60	
ST03	Sandviksveien 52	2024-08-06 16:30:00	64,8	78,9	-6,0	60	
ST04	Sandviksveien 70	2024-08-06 16:30:00	57,0	68,8	-6,0	60	
ST02	Kirkeveien 4	2024-08-06 16:00:00	53,3	73,4	-6,0	60	
ST01	Høvikveien 2C	2024-08-06 16:00:00	59,5	80,7	-6,0	60	
ST03	Sandviksveien 52	2024-08-06 16:00:00	64,5	88,6	-6,0	60	
ST04	Sandviksveien 70	2024-08-06 16:00:00	60,0	82,4	-6,0	60	

Namn	Adress	Datum	LEQ dBa	LMAX dBa	dbOffset	Larm	Kommentar
ST02	Kirkeveien 4	2024-08-06 15:30:00	52,9	72,7	-6,0	60	
ST01	Høvikveien 2C	2024-08-06 15:30:00	59,0	74,0	-6,0	60	
ST03	Sandviksveien 52	2024-08-06 15:30:00	62,2	84,2	-6,0	60	
ST04	Sandviksveien 70	2024-08-06 15:30:00	59,1	67,1	-6,0	60	
ST02	Kirkeveien 4	2024-08-06 15:00:00	55,4	76,2	-6,0	60	
ST01	Høvikveien 2C	2024-08-06 15:00:00	61,9	77,6	-6,0	60	
ST03	Sandviksveien 52	2024-08-06 15:00:00	63,5	81,7	-6,0	60	
ST04	Sandviksveien 70	2024-08-06 15:00:00	60,2	69,5	-6,0	60	
ST02	Kirkeveien 4	2024-08-06 14:30:00	56,6	82,4	-6,0	60	
ST01	Høvikveien 2C	2024-08-06 14:30:00	61,9	78,7	-6,0	60	
ST03	Sandviksveien 52	2024-08-06 14:30:00	63,2	75,4	-6,0	60	
ST04	Sandviksveien 70	2024-08-06 14:30:00	59,9	67,8	-6,0	60	
ST02	Kirkeveien 4	2024-08-06 14:00:00	53,5	69,3	-6,0	60	
ST01	Høvikveien 2C	2024-08-06 14:00:00	61,3	72,9	-6,0	60	
ST03	Sandviksveien 52	2024-08-06 14:00:00	64,5	86,3	-6,0	60	
ST04	Sandviksveien 70	2024-08-06 14:00:00	60,9	67,9	-6,0	60	
ST02	Kirkeveien 4	2024-08-06 13:30:00	52,9	67,8	-6,0	60	
ST01	Høvikveien 2C	2024-08-06 13:30:00	61,0	71,0	-6,0	60	
ST03	Sandviksveien 52	2024-08-06 13:30:00	63,0	74,2	-6,0	60	
ST04	Sandviksveien 70	2024-08-06 13:30:00	60,5	67,3	-6,0	60	
ST02	Kirkeveien 4	2024-08-06 13:00:00	52,9	70,4	-6,0	60	
ST01	Høvikveien 2C	2024-08-06 13:00:00	60,9	76,0	-6,0	60	
ST03	Sandviksveien 52	2024-08-06 13:00:00	63,4	75,7	-6,0	60	
ST04	Sandviksveien 70	2024-08-06 13:00:00	60,5	66,3	-6,0	60	
ST02	Kirkeveien 4	2024-08-06 12:30:00	53,7	76,1	-6,0	60	
ST01	Høvikveien 2C	2024-08-06 12:30:00	59,9	75,7	-6,0	60	
ST03	Sandviksveien 52	2024-08-06 12:30:00	62,8	74,5	-6,0	60	
ST04	Sandviksveien 70	2024-08-06 12:30:00	58,9	67,7	-6,0	60	
ST02	Kirkeveien 4	2024-08-06 12:00:00	51,7	68,8	-6,0	60	
ST01	Høvikveien 2C	2024-08-06 12:00:00	59,3	72,7	-6,0	60	
ST03	Sandviksveien 52	2024-08-06 12:00:00	61,8	73,8	-6,0	60	
ST04	Sandviksveien 70	2024-08-06 12:00:00	57,5	66,1	-6,0	60	
ST02	Kirkeveien 4	2024-08-06 11:30:00	54,2	78,6	-6,0	60	
ST01	Høvikveien 2C	2024-08-06 11:30:00	60,8	78,8	-6,0	60	
ST03	Sandviksveien 52	2024-08-06 11:30:00	62,7	80,3	-6,0	60	
ST04	Sandviksveien 70	2024-08-06 11:30:00	60,1	76,8	-6,0	60	
ST02	Kirkeveien 4	2024-08-06 11:00:00	50,9	67,7	-6,0	60	
ST01	Høvikveien 2C	2024-08-06 11:00:00	60,2	72,3	-6,0	60	
ST03	Sandviksveien 52	2024-08-06 11:00:00	63,3	69,6	-6,0	60	
ST04	Sandviksveien 70	2024-08-06 11:00:00	61,5	69,0	-6,0	60	
ST02	Kirkeveien 4	2024-08-06 10:30:00	51,7	70,9	-6,0	60	
ST01	Høvikveien 2C	2024-08-06 10:30:00	60,2	74,5	-6,0	60	
ST03	Sandviksveien 52	2024-08-06 10:30:00	64,0	80,0	-6,0	60	
ST04	Sandviksveien 70	2024-08-06 10:30:00	61,9	68,7	-6,0	60	

Namn	Adress	Datum	LEQ dBa	LMAX dBa	dbOffset	Larm	Kommentar
ST02	Kirkeveien 4	2024-08-06 10:00:00	52,0	69,3	-6,0	60	
ST01	Høvikveien 2C	2024-08-06 10:00:00	60,2	75,4	-6,0	60	
ST03	Sandviksveien 52	2024-08-06 10:00:00	64,0	78,3	-6,0	60	
ST04	Sandviksveien 70	2024-08-06 10:00:00	61,7	69,5	-6,0	60	
ST02	Kirkeveien 4	2024-08-06 09:30:00	51,5	68,9	-6,0	60	
ST01	Høvikveien 2C	2024-08-06 09:30:00	60,1	71,7	-6,0	60	
ST03	Sandviksveien 52	2024-08-06 09:30:00	65,2	82,1	-6,0	60	
ST04	Sandviksveien 70	2024-08-06 09:30:00	62,1	67,4	-6,0	60	
ST02	Kirkeveien 4	2024-08-06 09:00:00	52,5	75,6	-6,0	60	
ST01	Høvikveien 2C	2024-08-06 09:00:00	59,5	75,4	-6,0	60	
ST03	Sandviksveien 52	2024-08-06 09:00:00	68,4	90,5	-6,0	60	
ST04	Sandviksveien 70	2024-08-06 09:00:00	59,7	71,7	-6,0	60	
ST02	Kirkeveien 4	2024-08-06 08:30:00	53,8	79,9	-6,0	60	
ST01	Høvikveien 2C	2024-08-06 08:30:00	59,0	76,4	-6,0	60	
ST03	Sandviksveien 52	2024-08-06 08:30:00	70,8	91,2	-6,0	60	
ST04	Sandviksveien 70	2024-08-06 08:30:00	60,3	68,9	-6,0	60	
ST02	Kirkeveien 4	2024-08-06 08:00:00	51,3	69,1	-6,0	60	
ST01	Høvikveien 2C	2024-08-06 08:00:00	58,7	70,8	-6,0	60	
ST03	Sandviksveien 52	2024-08-06 08:00:00	65,8	85,9	-6,0	60	
ST04	Sandviksveien 70	2024-08-06 08:00:00	60,7	72,1	-6,0	60	
ST02	Kirkeveien 4	2024-08-06 07:30:00	52,5	72,0	-6,0	60	
ST01	Høvikveien 2C	2024-08-06 07:30:00	60,3	71,1	-6,0	60	
ST03	Sandviksveien 52	2024-08-06 07:30:00	65,0	77,1	-6,0	60	
ST04	Sandviksveien 70	2024-08-06 07:30:00	63,2	69,1	-6,0	60	
ST02	Kirkeveien 4	2024-08-06 07:00:00	52,2	74,0	-6,0	60	
ST01	Høvikveien 2C	2024-08-06 07:00:00	60,2	72,1	-6,0	60	
ST03	Sandviksveien 52	2024-08-06 07:00:00	64,4	69,9	-6,0	60	
ST04	Sandviksveien 70	2024-08-06 07:00:00	63,5	70,3	-6,0	60	
ST02	Kirkeveien 4	2024-08-06 06:30:00	53,2	75,4	-6,0	45	
ST01	Høvikveien 2C	2024-08-06 06:30:00	60,5	74,1	-6,0	45	
ST03	Sandviksveien 52	2024-08-06 06:30:00	64,4	71,3	-6,0	45	
ST04	Sandviksveien 70	2024-08-06 06:30:00	63,3	82,2	-6,0	45	
ST02	Kirkeveien 4	2024-08-06 06:00:00	51,2	69,4	-6,0	45	
ST01	Høvikveien 2C	2024-08-06 06:00:00	59,4	74,7	-6,0	45	
ST03	Sandviksveien 52	2024-08-06 06:00:00	62,7	69,4	-6,0	45	
ST04	Sandviksveien 70	2024-08-06 06:00:00	61,8	68,1	-6,0	45	
ST02	Kirkeveien 4	2024-08-06 05:30:00	49,2	70,5	-6,0	45	
ST01	Høvikveien 2C	2024-08-06 05:30:00	56,8	71,8	-6,0	45	
ST03	Sandviksveien 52	2024-08-06 05:30:00	60,1	68,4	-6,0	45	
ST04	Sandviksveien 70	2024-08-06 05:30:00	59,3	68,5	-6,0	45	
ST02	Kirkeveien 4	2024-08-06 05:00:00	52,1	80,8	-6,0	45	
ST01	Høvikveien 2C	2024-08-06 05:00:00	55,0	79,0	-6,0	45	
ST03	Sandviksveien 52	2024-08-06 05:00:00	56,6	65,8	-6,0	45	
ST04	Sandviksveien 70	2024-08-06 05:00:00	55,3	66,4	-6,0	45	

Namn	Adress	Datum	LEQ dBa	LMAX dBa	dbOffset	Larm	Kommentar
ST02	Kirkeveien 4	2024-08-06 04:30:00	44,1	50,5	-6,0	45	
ST01	Høvikveien 2C	2024-08-06 04:30:00	53,3	61,4	-6,0	45	
ST03	Sandviksveien 52	2024-08-06 04:30:00	56,4	65,4	-6,0	45	
ST04	Sandviksveien 70	2024-08-06 04:30:00	55,8	68,1	-6,0	45	
ST02	Kirkeveien 4	2024-08-06 04:00:00	43,3	51,7	-6,0	45	
ST01	Høvikveien 2C	2024-08-06 04:00:00	51,6	62,9	-6,0	45	
ST03	Sandviksveien 52	2024-08-06 04:00:00	54,8	67,2	-6,0	45	
ST04	Sandviksveien 70	2024-08-06 04:00:00	54,2	67,4	-6,0	45	
ST02	Kirkeveien 4	2024-08-06 03:30:00	43,1	51,5	-6,0	45	
ST01	Høvikveien 2C	2024-08-06 03:30:00	51,5	62,3	-6,0	45	
ST03	Sandviksveien 52	2024-08-06 03:30:00	54,0	65,1	-6,0	45	
ST04	Sandviksveien 70	2024-08-06 03:30:00	53,1	67,8	-6,0	45	
ST02	Kirkeveien 4	2024-08-06 03:00:00	42,1	50,4	-6,0	45	
ST01	Høvikveien 2C	2024-08-06 03:00:00	50,4	63,4	-6,0	45	
ST03	Sandviksveien 52	2024-08-06 03:00:00	53,4	65,0	-6,0	45	
ST04	Sandviksveien 70	2024-08-06 03:00:00	52,7	66,9	-6,0	45	
ST02	Kirkeveien 4	2024-08-06 02:30:00	42,8	50,9	-6,0	45	
ST01	Høvikveien 2C	2024-08-06 02:30:00	50,5	61,4	-6,0	45	
ST03	Sandviksveien 52	2024-08-06 02:30:00	54,2	63,0	-6,0	45	
ST04	Sandviksveien 70	2024-08-06 02:30:00	52,5	67,8	-6,0	45	
ST02	Kirkeveien 4	2024-08-06 02:00:00	43,5	58,8	-6,0	45	
ST01	Høvikveien 2C	2024-08-06 02:00:00	50,6	63,0	-6,0	45	
ST03	Sandviksveien 52	2024-08-06 02:00:00	54,7	66,4	-6,0	45	
ST04	Sandviksveien 70	2024-08-06 02:00:00	52,6	67,7	-6,0	45	
ST02	Kirkeveien 4	2024-08-06 01:30:00	45,2	68,7	-6,0	45	
ST01	Høvikveien 2C	2024-08-06 01:30:00	52,9	72,6	-6,0	45	
ST03	Sandviksveien 52	2024-08-06 01:30:00	55,9	70,2	-6,0	45	
ST04	Sandviksveien 70	2024-08-06 01:30:00	55,2	69,6	-6,0	45	
ST02	Kirkeveien 4	2024-08-06 01:00:00	45,7	70,4	-6,0	45	
ST01	Høvikveien 2C	2024-08-06 01:00:00	53,5	77,7	-6,0	45	
ST03	Sandviksveien 52	2024-08-06 01:00:00	55,3	65,2	-6,0	45	
ST04	Sandviksveien 70	2024-08-06 01:00:00	53,9	67,9	-6,0	45	
ST02	Kirkeveien 4	2024-08-06 00:30:00	46,4	69,3	-6,0	45	
ST01	Høvikveien 2C	2024-08-06 00:30:00	53,1	73,6	-6,0	45	
ST03	Sandviksveien 52	2024-08-06 00:30:00	56,5	65,1	-6,0	45	
ST04	Sandviksveien 70	2024-08-06 00:30:00	55,2	67,6	-6,0	45	
ST02	Kirkeveien 4	2024-08-06 00:00:00	48,2	68,8	-6,0	45	
ST01	Høvikveien 2C	2024-08-06 00:00:00	54,6	72,1	-6,0	45	
ST03	Sandviksveien 52	2024-08-06 00:00:00	57,6	66,3	-6,0	45	
ST04	Sandviksveien 70	2024-08-06 00:00:00	56,1	67,4	-6,0	45	
ST02	Kirkeveien 4	2024-08-05 23:30:00	49,6	69,7	-6,0	45	
ST01	Høvikveien 2C	2024-08-05 23:30:00	56,6	74,3	-6,0	45	
ST03	Sandviksveien 52	2024-08-05 23:30:00	58,5	68,3	-6,0	45	
ST04	Sandviksveien 70	2024-08-05 23:30:00	56,6	70,1	-6,0	45	

Namn	Adress	Datum	LEQ dBa	LMAX dBa	dbOffset	Larm	Kommentar
ST02	Kirkeveien 4	2024-08-05 23:00:00	50,3	69,6	-6,0	55	
ST01	Høvikveien 2C	2024-08-05 23:00:00	57,1	74,0	-6,0	55	
ST03	Sandviksveien 52	2024-08-05 23:00:00	59,3	65,5	-6,0	55	
ST04	Sandviksveien 70	2024-08-05 23:00:00	57,4	68,5	-6,0	55	
ST02	Kirkeveien 4	2024-08-05 22:30:00	49,3	70,4	-6,0	55	
ST01	Høvikveien 2C	2024-08-05 22:30:00	57,3	72,8	-6,0	55	
ST03	Sandviksveien 52	2024-08-05 22:30:00	60,2	69,5	-6,0	55	
ST04	Sandviksveien 70	2024-08-05 22:30:00	58,3	68,0	-6,0	55	
ST02	Kirkeveien 4	2024-08-05 22:00:00	50,9	70,4	-6,0	55	
ST01	Høvikveien 2C	2024-08-05 22:00:00	58,7	74,8	-6,0	55	
ST03	Sandviksveien 52	2024-08-05 22:00:00	60,8	81,4	-6,0	55	
ST04	Sandviksveien 70	2024-08-05 22:00:00	58,8	74,3	-6,0	55	
ST02	Kirkeveien 4	2024-08-05 21:30:00	51,8	71,4	-6,0	55	
ST01	Høvikveien 2C	2024-08-05 21:30:00	59,8	77,5	-6,0	55	
ST03	Sandviksveien 52	2024-08-05 21:30:00	61,6	72,8	-6,0	55	
ST04	Sandviksveien 70	2024-08-05 21:30:00	59,4	66,8	-6,0	55	
ST02	Kirkeveien 4	2024-08-05 21:00:00	51,5	69,8	-6,0	55	
ST01	Høvikveien 2C	2024-08-05 21:00:00	59,7	72,8	-6,0	55	
ST03	Sandviksveien 52	2024-08-05 21:00:00	61,9	70,0	-6,0	55	
ST04	Sandviksveien 70	2024-08-05 21:00:00	59,8	71,8	-6,0	55	
ST02	Kirkeveien 4	2024-08-05 20:30:00	51,6	69,5	-6,0	55	
ST01	Høvikveien 2C	2024-08-05 20:30:00	59,8	73,8	-6,0	55	
ST03	Sandviksveien 52	2024-08-05 20:30:00	62,1	70,2	-6,0	55	
ST04	Sandviksveien 70	2024-08-05 20:30:00	59,9	69,8	-6,0	55	
ST02	Kirkeveien 4	2024-08-05 20:00:00	52,1	73,5	-6,0	55	
ST01	Høvikveien 2C	2024-08-05 20:00:00	58,3	75,8	-6,0	55	
ST03	Sandviksveien 52	2024-08-05 20:00:00	60,5	74,0	-6,0	55	
ST04	Sandviksveien 70	2024-08-05 20:00:00	58,5	69,4	-6,0	55	
ST02	Kirkeveien 4	2024-08-05 19:30:00	51,6	70,0	-6,0	55	
ST01	Høvikveien 2C	2024-08-05 19:30:00	59,2	72,4	-6,0	55	
ST03	Sandviksveien 52	2024-08-05 19:30:00	61,7	68,2	-6,0	55	
ST04	Sandviksveien 70	2024-08-05 19:30:00	59,7	67,6	-6,0	55	
ST02	Kirkeveien 4	2024-08-05 19:00:00	56,6	78,3	-6,0	60	
ST01	Høvikveien 2C	2024-08-05 19:00:00	61,0	75,7	-6,0	60	
ST03	Sandviksveien 52	2024-08-05 19:00:00	66,1	80,7	-6,0	60	
ST04	Sandviksveien 70	2024-08-05 19:00:00	60,7	70,3	-6,0	60	
ST02	Kirkeveien 4	2024-08-05 18:30:00	53,3	79,0	-6,0	60	
ST01	Høvikveien 2C	2024-08-05 18:30:00	60,9	74,1	-6,0	60	
ST03	Sandviksveien 52	2024-08-05 18:30:00	67,7	83,7	-6,0	60	
ST04	Sandviksveien 70	2024-08-05 18:30:00	60,6	70,4	-6,0	60	
ST02	Kirkeveien 4	2024-08-05 18:00:00	54,5	77,2	-6,0	60	
ST01	Høvikveien 2C	2024-08-05 18:00:00	61,2	74,1	-6,0	60	
ST03	Sandviksveien 52	2024-08-05 18:00:00	63,4	76,7	-6,0	60	
ST04	Sandviksveien 70	2024-08-05 18:00:00	60,4	68,6	-6,0	60	



Namn	Adress	Datum	LEQ dBa	LMAX dBa	dbOffset	Larm	Kommentar
ST02	Kirkeveien 4	2024-08-05 17:30:00	53,7	79,8	-6,0	60	
ST01	Høvikveien 2C	2024-08-05 17:30:00	61,2	74,6	-6,0	60	
ST03	Sandviksveien 52	2024-08-05 17:30:00	63,9	72,5	-6,0	60	
ST04	Sandviksveien 70	2024-08-05 17:30:00	60,6	67,6	-6,0	60	
ST02	Kirkeveien 4	2024-08-05 17:00:00	53,0	71,0	-6,0	60	
ST01	Høvikveien 2C	2024-08-05 17:00:00	61,1	74,7	-6,0	60	
ST03	Sandviksveien 52	2024-08-05 17:00:00	65,1	82,7	-6,0	60	
ST04	Sandviksveien 70	2024-08-05 17:00:00	60,5	74,0	-6,0	60	
ST02	Kirkeveien 4	2024-08-05 16:30:00	51,9	71,6	-6,0	60	
ST01	Høvikveien 2C	2024-08-05 16:30:00	59,7	76,2	-6,0	60	
ST03	Sandviksveien 52	2024-08-05 16:30:00	63,7	79,1	-6,0	60	
ST04	Sandviksveien 70	2024-08-05 16:30:00	58,3	67,2	-6,0	60	
ST02	Kirkeveien 4	2024-08-05 16:00:00	53,4	85,2	-6,0	60	
ST01	Høvikveien 2C	2024-08-05 16:00:00	58,4	77,6	-6,0	60	
ST03	Sandviksveien 52	2024-08-05 16:00:00	62,7	82,7	-6,0	60	
ST04	Sandviksveien 70	2024-08-05 16:00:00	57,4	69,4	-6,0	60	
ST02	Kirkeveien 4	2024-08-05 15:30:00	51,1	69,8	-6,0	60	
ST01	Høvikveien 2C	2024-08-05 15:30:00	58,3	73,8	-6,0	60	
ST03	Sandviksveien 52	2024-08-05 15:30:00	66,0	81,2	-6,0	60	
ST04	Sandviksveien 70	2024-08-05 15:30:00	57,7	67,4	-6,0	60	
ST02	Kirkeveien 4	2024-08-05 15:00:00	53,0	74,9	-6,0	60	
ST01	Høvikveien 2C	2024-08-05 15:00:00	58,9	74,9	-6,0	60	
ST03	Sandviksveien 52	2024-08-05 15:00:00	65,8	84,1	-6,0	60	
ST04	Sandviksveien 70	2024-08-05 15:00:00	59,1	67,2	-6,0	60	
ST02	Kirkeveien 4	2024-08-05 14:30:00	52,1	70,5	-6,0	60	
ST01	Høvikveien 2C	2024-08-05 14:30:00	60,2	76,9	-6,0	60	
ST03	Sandviksveien 52	2024-08-05 14:30:00	65,6	88,0	-6,0	60	
ST04	Sandviksveien 70	2024-08-05 14:30:00	59,7	69,4	-6,0	60	
ST02	Kirkeveien 4	2024-08-05 14:00:00	53,6	75,8	-6,0	60	
ST01	Høvikveien 2C	2024-08-05 14:00:00	61,1	73,5	-6,0	60	
ST03	Sandviksveien 52	2024-08-05 14:00:00	65,8	82,8	-6,0	60	
ST04	Sandviksveien 70	2024-08-05 14:00:00	60,8	67,4	-6,0	60	
ST02	Kirkeveien 4	2024-08-05 13:30:00	51,3	69,5	-6,0	60	
ST01	Høvikveien 2C	2024-08-05 13:30:00	59,6	71,7	-6,0	60	
ST03	Sandviksveien 52	2024-08-05 13:30:00	66,7	86,3	-6,0	60	
ST04	Sandviksveien 70	2024-08-05 13:30:00	60,8	68,3	-6,0	60	
ST02	Kirkeveien 4	2024-08-05 13:00:00	51,9	69,4	-6,0	60	
ST01	Høvikveien 2C	2024-08-05 13:00:00	60,3	73,9	-6,0	60	
ST03	Sandviksveien 52	2024-08-05 13:00:00	68,0	85,6	-6,0	60	
ST04	Sandviksveien 70	2024-08-05 13:00:00	60,9	71,5	-6,0	60	
ST02	Kirkeveien 4	2024-08-05 12:30:00	50,2	68,7	-6,0	60	
ST01	Høvikveien 2C	2024-08-05 12:30:00	59,0	67,7	-6,0	60	
ST03	Sandviksveien 52	2024-08-05 12:30:00	64,9	85,7	-6,0	60	
ST04	Sandviksveien 70	2024-08-05 12:30:00	60,2	65,4	-6,0	60	

Namn	Adress	Datum	LEQ dBa	LMAX dBa	dbOffset	Larm	Kommentar
ST02	Kirkeveien 4	2024-08-05 12:00:00	51,2	70,1	-6,0	60	
ST01	Høvikveien 2C	2024-08-05 12:00:00	59,1	75,4	-6,0	60	
ST03	Sandviksveien 52	2024-08-05 12:00:00	62,6	75,3	-6,0	60	
ST04	Sandviksveien 70	2024-08-05 12:00:00	58,9	66,0	-6,0	60	
ST02	Kirkeveien 4	2024-08-05 11:30:00	50,4	74,3	-6,0	60	
ST01	Høvikveien 2C	2024-08-05 11:30:00	59,3	74,2	-6,0	60	
ST03	Sandviksveien 52	2024-08-05 11:30:00	62,3	69,3	-6,0	60	
ST04	Sandviksveien 70	2024-08-05 11:30:00	60,2	65,4	-6,0	60	
ST02	Kirkeveien 4	2024-08-05 11:00:00	51,8	69,9	-6,0	60	
ST01	Høvikveien 2C	2024-08-05 11:00:00	60,3	74,8	-6,0	60	
ST03	Sandviksveien 52	2024-08-05 11:00:00	63,6	76,8	-6,0	60	
ST04	Sandviksveien 70	2024-08-05 11:00:00	61,4	72,8	-6,0	60	
ST02	Kirkeveien 4	2024-08-05 10:30:00	51,8	68,6	-6,0	60	
ST01	Høvikveien 2C	2024-08-05 10:30:00	60,1	71,8	-6,0	60	
ST03	Sandviksveien 52	2024-08-05 10:30:00	64,7	77,8	-6,0	60	
ST04	Sandviksveien 70	2024-08-05 10:30:00	61,6	67,0	-6,0	60	
ST02	Kirkeveien 4	2024-08-05 10:00:00	52,3	68,6	-6,0	60	
ST01	Høvikveien 2C	2024-08-05 10:00:00	60,5	72,9	-6,0	60	
ST03	Sandviksveien 52	2024-08-05 10:00:00	64,4	78,7	-6,0	60	
ST04	Sandviksveien 70	2024-08-05 10:00:00	61,6	70,5	-6,0	60	
ST02	Kirkeveien 4	2024-08-05 09:30:00	52,4	70,0	-6,0	60	
ST01	Høvikveien 2C	2024-08-05 09:30:00	60,1	71,3	-6,0	60	
ST03	Sandviksveien 52	2024-08-05 09:30:00	66,8	81,4	-6,0	60	
ST04	Sandviksveien 70	2024-08-05 09:30:00	62,1	68,2	-6,0	60	
ST02	Kirkeveien 4	2024-08-05 09:00:00	52,1	68,6	-6,0	60	
ST01	Høvikveien 2C	2024-08-05 09:00:00	59,4	72,6	-6,0	60	
ST03	Sandviksveien 52	2024-08-05 09:00:00	66,1	80,5	-6,0	60	
ST04	Sandviksveien 70	2024-08-05 09:00:00	61,1	67,2	-6,0	60	
ST02	Kirkeveien 4	2024-08-05 08:30:00	51,3	71,0	-6,0	60	
ST01	Høvikveien 2C	2024-08-05 08:30:00	58,9	79,1	-6,0	60	
ST03	Sandviksveien 52	2024-08-05 08:30:00	64,1	79,2	-6,0	60	
ST04	Sandviksveien 70	2024-08-05 08:30:00	58,6	68,4	-6,0	60	
ST02	Kirkeveien 4	2024-08-05 08:00:00	51,3	71,7	-6,0	60	
ST01	Høvikveien 2C	2024-08-05 08:00:00	59,1	72,5	-6,0	60	
ST03	Sandviksveien 52	2024-08-05 08:00:00	67,0	84,9	-6,0	60	
ST04	Sandviksveien 70	2024-08-05 08:00:00	59,5	67,7	-6,0	60	
ST02	Kirkeveien 4	2024-08-05 07:30:00	50,8	70,4	-6,0	60	
ST01	Høvikveien 2C	2024-08-05 07:30:00	58,9	72,4	-6,0	60	
ST03	Sandviksveien 52	2024-08-05 07:30:00	64,6	78,8	-6,0	60	
ST04	Sandviksveien 70	2024-08-05 07:30:00	59,3	66,2	-6,0	60	
ST02	Kirkeveien 4	2024-08-05 07:00:00	51,0	68,8	-6,0	60	
ST01	Høvikveien 2C	2024-08-05 07:00:00	58,9	73,6	-6,0	60	
ST03	Sandviksveien 52	2024-08-05 07:00:00	62,6	68,5	-6,0	60	
ST04	Sandviksveien 70	2024-08-05 07:00:00	59,8	68,1	-6,0	60	

Namn	Adress	Datum	LEQ dBa	LMAX dBa	dbOffset	Larm	Kommentar
ST02	Kirkeveien 4	2024-08-05 06:30:00	51,4	71,7	-6,0	45	
ST01	Høvikveien 2C	2024-08-05 06:30:00	59,5	74,4	-6,0	45	
ST03	Sandviksveien 52	2024-08-05 06:30:00	63,2	69,6	-6,0	45	
ST04	Sandviksveien 70	2024-08-05 06:30:00	62,3	70,7	-6,0	45	
ST02	Kirkeveien 4	2024-08-05 06:00:00	50,7	69,5	-6,0	45	
ST01	Høvikveien 2C	2024-08-05 06:00:00	59,9	82,2	-6,0	45	
ST03	Sandviksveien 52	2024-08-05 06:00:00	62,1	70,8	-6,0	45	
ST04	Sandviksveien 70	2024-08-05 06:00:00	61,9	68,2	-6,0	45	
ST02	Kirkeveien 4	2024-08-05 05:30:00	50,0	71,6	-6,0	45	
ST01	Høvikveien 2C	2024-08-05 05:30:00	57,5	75,0	-6,0	45	
ST03	Sandviksveien 52	2024-08-05 05:30:00	59,6	66,7	-6,0	45	
ST04	Sandviksveien 70	2024-08-05 05:30:00	59,5	68,8	-6,0	45	
ST02	Kirkeveien 4	2024-08-05 05:00:00	45,7	69,1	-6,0	45	
ST01	Høvikveien 2C	2024-08-05 05:00:00	53,7	68,8	-6,0	45	
ST03	Sandviksveien 52	2024-08-05 05:00:00	56,1	68,4	-6,0	45	
ST04	Sandviksveien 70	2024-08-05 05:00:00	55,5	67,2	-6,0	45	
ST02	Kirkeveien 4	2024-08-05 04:30:00	45,5	68,8	-6,0	45	
ST01	Høvikveien 2C	2024-08-05 04:30:00	53,3	70,8	-6,0	45	
ST03	Sandviksveien 52	2024-08-05 04:30:00	55,4	67,2	-6,0	45	
ST04	Sandviksveien 70	2024-08-05 04:30:00	54,7	68,3	-6,0	45	
ST02	Kirkeveien 4	2024-08-05 04:00:00	43,0	49,7	-6,0	45	
ST01	Høvikveien 2C	2024-08-05 04:00:00	51,7	61,6	-6,0	45	
ST03	Sandviksveien 52	2024-08-05 04:00:00	54,0	63,1	-6,0	45	
ST04	Sandviksveien 70	2024-08-05 04:00:00	53,5	65,6	-6,0	45	
ST02	Kirkeveien 4	2024-08-05 03:30:00	41,9	48,7	-6,0	45	
ST01	Høvikveien 2C	2024-08-05 03:30:00	50,1	60,4	-6,0	45	
ST03	Sandviksveien 52	2024-08-05 03:30:00	53,7	67,9	-6,0	45	
ST04	Sandviksveien 70	2024-08-05 03:30:00	53,1	68,7	-6,0	45	
ST02	Kirkeveien 4	2024-08-05 03:00:00	41,4	49,3	-6,0	45	
ST01	Høvikveien 2C	2024-08-05 03:00:00	49,6	60,9	-6,0	45	
ST03	Sandviksveien 52	2024-08-05 03:00:00	53,3	64,9	-6,0	45	
ST04	Sandviksveien 70	2024-08-05 03:00:00	52,3	67,8	-6,0	45	
ST02	Kirkeveien 4	2024-08-05 02:30:00	41,9	49,0	-6,0	45	
ST01	Høvikveien 2C	2024-08-05 02:30:00	50,2	60,1	-6,0	45	
ST03	Sandviksveien 52	2024-08-05 02:30:00	53,6	63,7	-6,0	45	
ST04	Sandviksveien 70	2024-08-05 02:30:00	52,5	68,1	-6,0	45	
ST02	Kirkeveien 4	2024-08-05 02:00:00	42,0	49,1	-6,0	45	
ST01	Høvikveien 2C	2024-08-05 02:00:00	50,3	61,2	-6,0	45	
ST03	Sandviksveien 52	2024-08-05 02:00:00	53,4	65,1	-6,0	45	
ST04	Sandviksveien 70	2024-08-05 02:00:00	52,3	67,1	-6,0	45	
ST02	Kirkeveien 4	2024-08-05 01:30:00	45,0	70,1	-6,0	45	
ST01	Høvikveien 2C	2024-08-05 01:30:00	52,0	71,7	-6,0	45	
ST03	Sandviksveien 52	2024-08-05 01:30:00	54,2	65,3	-6,0	45	
ST04	Sandviksveien 70	2024-08-05 01:30:00	53,1	67,4	-6,0	45	

Namn	Adress	Datum	LEQ dBa	LMAX dBa	dbOffset	Larm	Kommentar
ST02	Kirkeveien 4	2024-08-05 01:00:00	45,6	68,0	-6,0	45	
ST01	Høvikveien 2C	2024-08-05 01:00:00	52,6	72,8	-6,0	45	
ST03	Sandviksveien 52	2024-08-05 01:00:00	55,1	64,9	-6,0	45	
ST04	Sandviksveien 70	2024-08-05 01:00:00	53,6	67,4	-6,0	45	
ST02	Kirkeveien 4	2024-08-05 00:30:00	45,9	68,0	-6,0	45	
ST01	Høvikveien 2C	2024-08-05 00:30:00	52,8	76,1	-6,0	45	
ST03	Sandviksveien 52	2024-08-05 00:30:00	56,2	73,8	-6,0	45	
ST04	Sandviksveien 70	2024-08-05 00:30:00	55,1	67,5	-6,0	45	
ST02	Kirkeveien 4	2024-08-05 00:00:00	46,0	67,7	-6,0	45	
ST01	Høvikveien 2C	2024-08-05 00:00:00	54,3	70,4	-6,0	45	
ST03	Sandviksveien 52	2024-08-05 00:00:00	57,2	65,1	-6,0	45	
ST04	Sandviksveien 70	2024-08-05 00:00:00	56,0	66,9	-6,0	45	